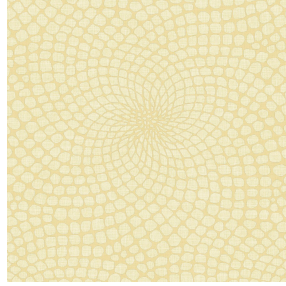




OPAQ BPI 00
Printing support



MELODY Vanille 51
Print pattern



Printing support **OPAQ BPI 00** Print pattern **MELODY Vanille 51**

Unclassified blackout print support

Technical properties

Applications Roman blinds - Panel curtains - Lining - Curtains






Composition 100% polyester with white flocked acrylic backing

Weight 280 g/m²

Width 280 cm

Fabric direction Room High Direction

Fitting ↔ 0.0 cm ↓ 0.0 cm

Maintenance advice     

Label

Minimum order 25 linear(s) meter(s)



Visual not taking into account the printing medium, the final rendering may vary according to the chosen medium.

Technical characteristics

Optical index

Light reflexion :	82 %
Light absorption :	18 %
Light transmission :	0 %

Thermal index

Solar reflexion :	74 %
Solar absorption :	26 %
Solar transmission :	0 %
UV transmission :	0 %
Gtot :	Gt 33 % Fc 55 %

Resilience

Lightfastness (units Class/8)	5
Dimensional Stability (%)	
Warp	-0,5
Weft	0
Breaking Elongation	
Warp	26
Weft	15
Breaking load (daN)	
Warp	62
Weft	31

Print pattern MELODY



MELODY Fuchsia 33



MELODY Naturel 26



MELODY Anis 62



MELODY Lin 11



MELODY Orange 15



MELODY Ficelle 09



MELODY Turquoise 53



MELODY Acier 18

drapilux
By Sotexpro

DRAPILUX GmbH - Hafenstraße 3, 77694 Kehl - Deutschland

Non-contractual photos and colors - Indicative fitting - Fitting may vary depending on support selected