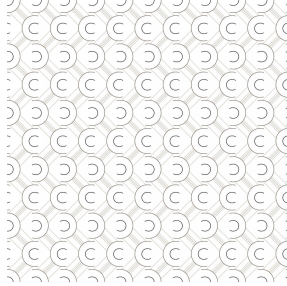




**OPAQ BPI 00**  
Printing support



**VARELY Titanium 98**  
Print pattern



Visual not taking into account the printing medium, the final rendering may vary according to the chosen medium.

## Printing support **OPAQ BPI 00** Print pattern **VARELY Titanium 98**

Unclassified blackout print support

### Technical properties

**Applications** Roman blinds - Panel curtains - Lining - Curtains






**Composition** 100% polyester with white flocked acrylic backing

**Weight** 280 g/m<sup>2</sup>

**Width** 280 cm

**Fabric direction** Room High Direction

**Fitting** ↔ 0.0 cm ↑ 0.0 cm

**Maintenance advice**     

**Label**

**Minimum order** 25 linear(s) meter(s)

## Technical characteristics

### Optical index

Light reflexion : **82 %**

Light absorption : **18 %**

Light transmission : **0 %**

### Thermal index

Solar reflexion : **74 %**

Solar absorption : **26 %**

Solar transmission : **0 %**

UV transmission : **0 %**

Gtot : **Gt 33 % Fc 55 %**

### Resilience

Lightfastness (units Class/8) **5**

Dimensional Stability (%)

Warp **-0,5**

Weft **0**

Breaking Elongation

Warp **26**

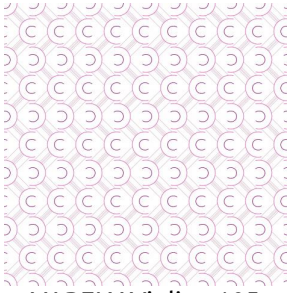
Weft **15**

Breaking load (daN)

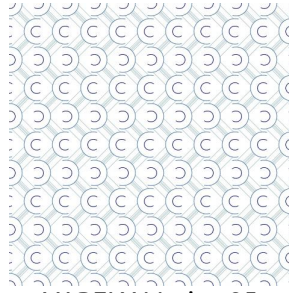
Warp **62**

Weft **31**

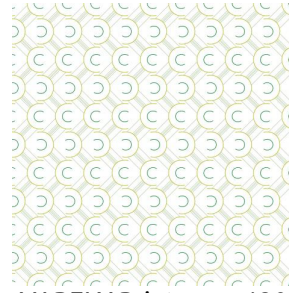
# Print pattern VARELY



VARELY Violine 105



VARELY Marine 25



VARELY Printemps 130