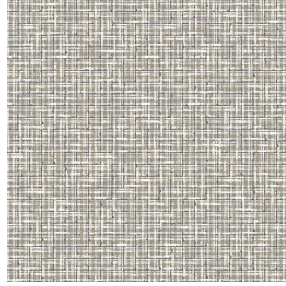




OPAQ BPI 00
Printing support



SALIN Naturel 26
Print pattern



Printing support **OPAQ BPI 00** Print pattern **SALIN Naturel 26**

Unclassified blackout print support

Technical properties

Applications Roman blinds - Panel curtains - Lining - Curtains

Composition 100% polyester with white flocked acrylic backing

Weight 280 g/m²

Width 280 cm

Fabric direction Room High Direction

Fitting ↔ 0.0 cm ↑ 0.0 cm

Maintenance advice     

Label

Minimum order 25 linear(s) meter(s)



Visual not taking into account the printing medium, the final rendering may vary according to the chosen medium.

Technical characteristics

Optical index

Light reflexion :	82 %
Light absorption :	18 %
Light transmission :	0 %

Thermal index

Solar reflexion :	74 %
Solar absorption :	26 %
Solar transmission :	0 %
UV transmission :	0 %
Gtot :	Gt 33 % Fc 55 %

Resilience

Lightfastness (units Class/8)	5
Dimensional Stability (%)	
Warp	-0,5
Weft	0
Breaking Elongation	
Warp	26
Weft	15
Breaking load (daN)	
Warp	62
Weft	31

Print pattern SALIN



SALIN Abricot 08



SALIN Anis 62



SALIN Fuchsia 33



SALIN Océan 91



SALIN Orange 15



SALIN Rouge 21



SALIN Turquoise 53



SALIN Vert 24