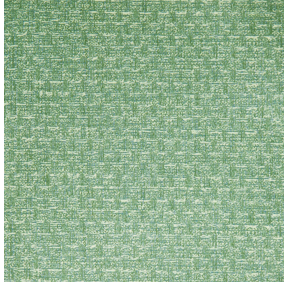
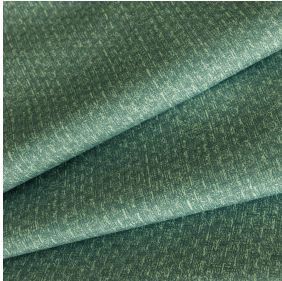




OPAQ BPI 00
Printing support








RUSTIC Prairie 125
Print pattern




Printing support **OPAQ BPI 00** Print pattern **RUSTIC Prairie 125**

Unclassified blackout print support

Technical properties

- Applications** Roman blinds - Panel curtains - Lining - Curtains
- Composition** 100% polyester with white flocked acrylic backing
- Weight** 280 g/m²
- Width** 280 cm
- Fabric direction** Room High Direction
- Fitting** ↔ cm ↓ cm
- Maintenance advice**     
- Label**
- Minimum order** 25 linear(s) meter(s)

 Visual not taking into account the printing medium, the final rendering may vary according to the chosen medium.

Technical characteristics

Optical index	Light reflexion :	82 %
	Light absorption :	18 %
	Light transmission :	0 %
Thermal index	Solar reflexion :	74 %
	Solar absorption :	26 %
	Solar transmission :	0 %
	UV transmission :	0 %
	Gtot :	Gt 33 % Fc 55 %
Resilience	Lightfastness (units Class/8)	5
	Dimentional Stability (%)	
	Warp	-0,5
	Weft	0
	Breaking Elongation	
	Warp	26
	Weft	15
	Breaking load (daN)	
	Warp	62
	Weft	31

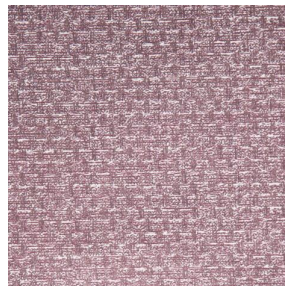
Print pattern RUSTIC



RUSTIC Lin 11



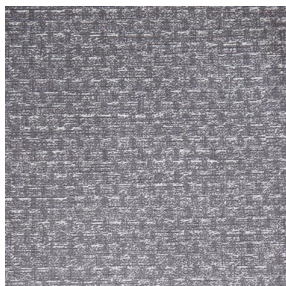
RUSTIC Naturel 26



RUSTIC Sienne 29



RUSTIC Terre 107



RUSTIC Taupe 95



RUSTIC Titanium 98



RUSTIC Hortensia 134



RUSTIC Bergamote 121



RUSTIC Mousse 92



RUSTIC Glacier 43



RUSTIC Bleu 41

drapilux
By Sotexpro

DRAPILUX GmbH - Hafenstraße 3, 77694 Kehl - Deutschland

Non-contractual photos and colors - Indicative fitting - Fitting may vary depending on support selected