



OPAQ BPI 00
Printing support



SCOURTIN Ebene 113
Print pattern



Printing support **OPAQ BPI 00** Print pattern **SCOURTIN Ebene 113**

Unclassified blackout print support

Technical properties

Applications Roman blinds - Panel curtains - Lining - Curtains

Composition 100% polyester with white flocked acrylic backing

Weight 280 g/m²

Width 280 cm

Fabric direction Room High Direction

Fitting ↔ cm ↓ cm

Maintenance advice     

Label

Minimum order 25 linear(s) meter(s)



Visual not taking into account the printing medium, the final rendering may vary according to the chosen medium.

Technical characteristics

Optical index	Light reflexion :	82 %
	Light absorption :	18 %
	Light transmission :	0 %
Thermal index	Solar reflexion :	74 %
	Solar absorption :	26 %
	Solar transmission :	0 %
	UV transmission :	0 %
	Gtot :	Gt 33 % Fc 55 %
Resilience	Lightfastness (units Class/8)	5
	Dimensional Stability (%)	
	Warp	-0,5
	Weft	0
	Breaking Elongation	
	Warp	26
	Weft	15
	Breaking load (daN)	
Warp	62	
Weft	31	

Print pattern SCOURTIN



SCOURTIN Beige 63



SCOURTIN Fuchsia 33



SCOURTIN Sapin 126



SCOURTIN Bergamote
121



SCOURTIN Anthracite
38



SCOURTIN Violine 105



SCOURTIN Pacifique 54



SCOURTIN Rose 129



SCOURTIN Blanc 01



SCOURTIN Lin 11



SCOURTIN Naturel 26



SCOURTIN Citrouille
136



SCOURTIN Turquoise 53



SCOURTIN Brun 23



SCOURTIN Hortensia
134



SCOURTIN Orage 123



SCOURTIN Rubis 59



SCOURTIN Ficelle 09



SCOURTIN Maïs 37



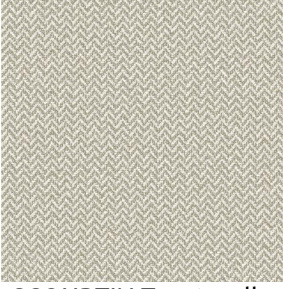
SCOURTIN Céladon 135

drapilux
By Sotexpro

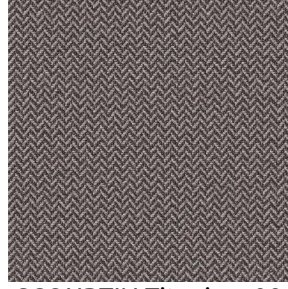
DRAPILUX GmbH - Hofenstraße 3, 77694 Kehl - Deutschland

Non-contractual photos and colors - Indicative fitting - Fitting may vary depending on support selected

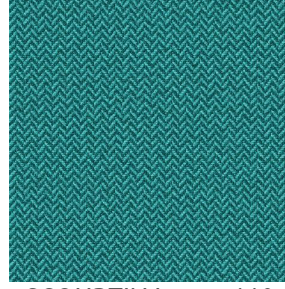
Print pattern SCOURTIN



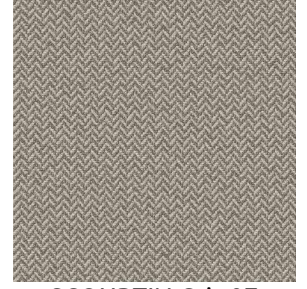
SCOURTIN Tourterelle
138



SCOURTIN Titanium 98



SCOURTIN Lagon 110



SCOURTIN Gris 97