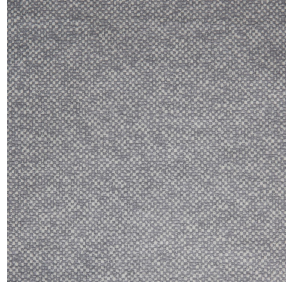




OPAQ BPI 00
Printing support



ANATOLE lin 11
Print pattern



Printing support **OPAQ BPI 00** Print pattern **ANATOLE lin 11**

Unclassified blackout print support

Technical properties

Applications Roman blinds - Panel curtains - Lining - Curtains

Composition 100% polyester with white flocked acrylic backing

Weight 280 g/m²

Width 280 cm

Fabric direction Room High Direction

Fitting ↔ cm ↓ cm

Maintenance advice     

Label

Minimum order 25 linear(s) meter(s)



Visual not taking into account the printing medium, the final rendering may vary according to the chosen medium.

Technical characteristics

Optical index

| | |
|----------------------|-------------|
| Light reflexion : | 82 % |
| Light absorption : | 18 % |
| Light transmission : | 0 % |

Thermal index

| | |
|----------------------|------------------------|
| Solar reflexion : | 74 % |
| Solar absorption : | 26 % |
| Solar transmission : | 0 % |
| UV transmission : | 0 % |
| Gtot : | Gt 33 % Fc 55 % |

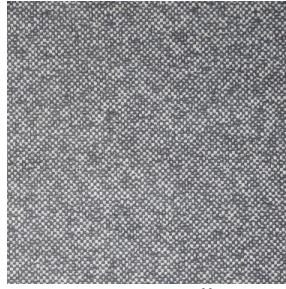
Resilience

| | |
|-------------------------------|-------------|
| Lightfastness (units Class/8) | 5 |
| Dimensional Stability (%) | |
| Warp | -0,5 |
| Weft | 0 |
| Breaking Elongation | |
| Warp | 26 |
| Weft | 15 |
| Breaking load (daN) | |
| Warp | 62 |
| Weft | 31 |

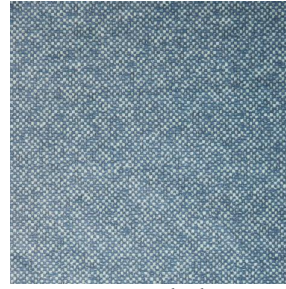
Print pattern ANATOLE



ANATOLE Naturel 26



ANATOLE Ficelle 09



ANATOLE Celadon 135



ANATOLE Océan 91



ANATOLE Titanium 98



ANATOLE Cactus 36



ANATOLE mousse 92



ANATOLE Or 94



ANATOLE Chaudron
118



ANATOLE Amarante
108



ANATOLE Taupe 95