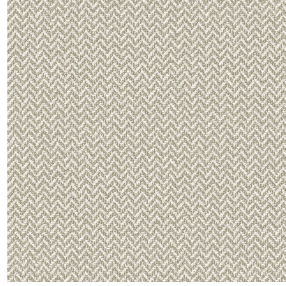




OPAQ BPI 00  
Printing support



SCOURTIN Tourterelle 138  
Print pattern



Visual not taking into account the printing medium, the final rendering may vary according to the chosen medium.

## Printing support **OPAQ BPI 00** Print pattern **SCOURTIN Tourterelle 138**

Unclassified blackout print support

### Technical properties

**Applications** Roman blinds - Panel curtains - Lining - Curtains

**Composition** 100% polyester with white flocked acrylic backing

**Weight** 280 g/m<sup>2</sup>

**Width** 280 cm

**Fabric direction** Room High Direction

**Fitting** ↔ cm ↓ cm

**Maintenance advice**     

**Label**

**Minimum order** 25 linear(s) meter(s)

## Technical characteristics

|               |                               |                 |
|---------------|-------------------------------|-----------------|
| Optical index | Light reflexion :             | 82 %            |
|               | Light absorption :            | 18 %            |
|               | Light transmission :          | 0 %             |
| Thermal index | Solar reflexion :             | 74 %            |
|               | Solar absorption :            | 26 %            |
|               | Solar transmission :          | 0 %             |
|               | UV transmission :             | 0 %             |
|               | Gtot :                        | Gt 33 % Fc 55 % |
| Resilience    | Lightfastness (units Class/8) | 5               |
|               | Dimensional Stability (%)     |                 |
|               | Warp                          | -0,5            |
|               | Weft                          | 0               |
|               | Breaking Elongation           |                 |
|               | Warp                          | 26              |
|               | Weft                          | 15              |
|               | Breaking load (daN)           |                 |
| Warp          | 62                            |                 |
| Weft          | 31                            |                 |



# Print pattern SCOURTIN



SCOURTIN Beige 63



SCOURTIN Fuchsia 33



SCOURTIN Sapin 126



SCOURTIN Bergamote  
121



SCOURTIN Anthracite  
38



SCOURTIN Violine 105



SCOURTIN Pacifique 54



SCOURTIN Rose 129



SCOURTIN Blanc 01



SCOURTIN Lin 11



SCOURTIN Naturel 26



SCOURTIN Citrouille  
136



SCOURTIN Turquoise 53



SCOURTIN Brun 23



SCOURTIN Hortensia  
134



SCOURTIN Orage 123



SCOURTIN Rubis 59



SCOURTIN Ficelle 09



SCOURTIN Maïs 37



SCOURTIN Céladon 135

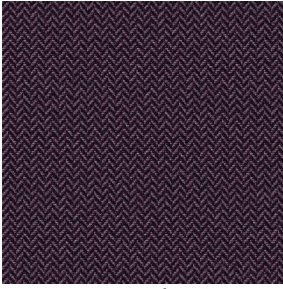
**drapilux**  
By Sotexpro

DRAPILUX GmbH - Hofenstraße 3, 77694 Kehl - Deutschland

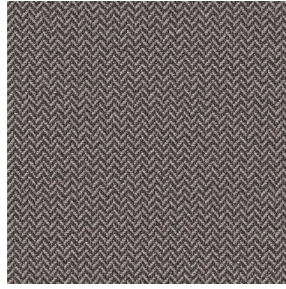
Non-contractual photos and colors - Indicative fitting - Fitting may vary depending on support selected



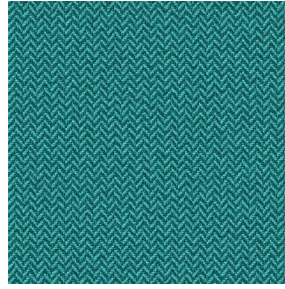
## Print pattern SCOURTIN



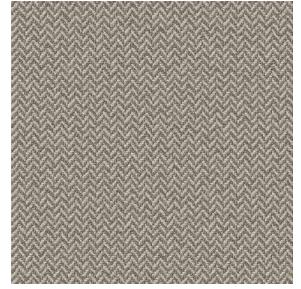
SCOURTIN Ebene 113



SCOURTIN Titanium 98



SCOURTIN Lagon 110



SCOURTIN Gris 97