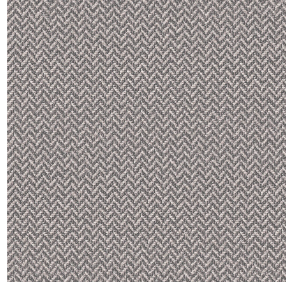




**OPAQ BPI 00**  
Printing support



**SCOURTIN Orage 123**  
Print pattern



## Printing support **OPAQ BPI 00** Print pattern **SCOURTIN Orage 123**

Unclassified blackout print support

### Technical properties

**Applications** Roman blinds - Panel curtains - Lining - Curtains

**Composition** 100% polyester with white flocked acrylic backing

**Weight** 280 g/m<sup>2</sup>

**Width** 280 cm

**Fabric direction** Room High Direction

**Fitting** ↔ cm ↓ cm

**Maintenance advice**     

**Label**

**Minimum order** 25 linear(s) meter(s)



Visual not taking into account the printing medium, the final rendering may vary according to the chosen medium.

## Technical characteristics

|               |                               |                        |
|---------------|-------------------------------|------------------------|
| Optical index | Light reflexion :             | <b>82 %</b>            |
|               | Light absorption :            | <b>18 %</b>            |
|               | Light transmission :          | <b>0 %</b>             |
| Thermal index | Solar reflexion :             | <b>74 %</b>            |
|               | Solar absorption :            | <b>26 %</b>            |
|               | Solar transmission :          | <b>0 %</b>             |
|               | UV transmission :             | <b>0 %</b>             |
|               | Gtot :                        | <b>Gt 33 % Fc 55 %</b> |
| Resilience    | Lightfastness (units Class/8) | <b>5</b>               |
|               | Dimensional Stability (%)     |                        |
|               | Warp                          | <b>-0,5</b>            |
|               | Weft                          | <b>0</b>               |
|               | Breaking Elongation           |                        |
|               | Warp                          | <b>26</b>              |
|               | Weft                          | <b>15</b>              |
|               | Breaking load (daN)           |                        |
| Warp          | <b>62</b>                     |                        |
| Weft          | <b>31</b>                     |                        |



# Print pattern SCOURTIN



SCOURTIN Beige 63



SCOURTIN Fuchsia 33



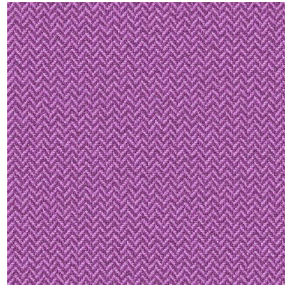
SCOURTIN Sapin 126



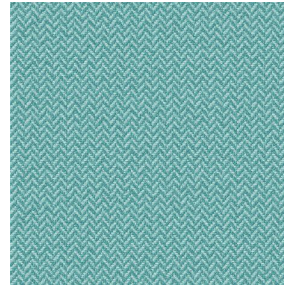
SCOURTIN Bergamote  
121



SCOURTIN Anthracite  
38



SCOURTIN Violine 105



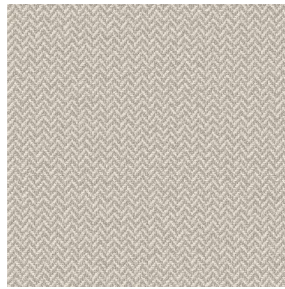
SCOURTIN Pacifique 54



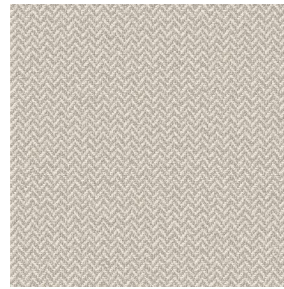
SCOURTIN Rose 129



SCOURTIN Blanc 01



SCOURTIN Lin 11



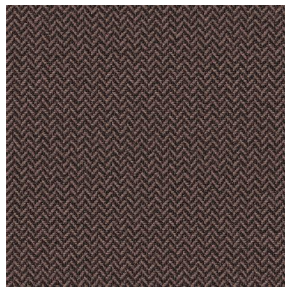
SCOURTIN Naturel 26



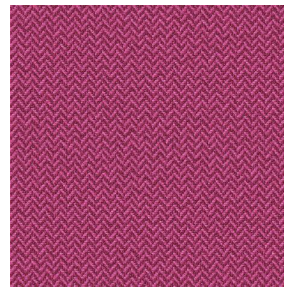
SCOURTIN Citrouille  
136



SCOURTIN Turquoise 53



SCOURTIN Brun 23



SCOURTIN Hortensia  
134



SCOURTIN Rubis 59



SCOURTIN Ficelle 09



SCOURTIN Maïs 37



SCOURTIN Céladon 135



SCOURTIN Ebene 113

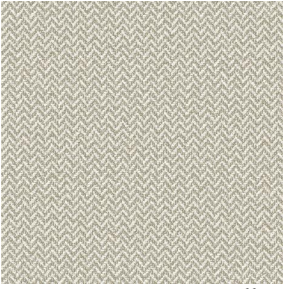
**drapilux**  
By Sotexpro

DRAPILUX GmbH - Hofenstraße 3, 77694 Kehl - Deutschland

Non-contractual photos and colors - Indicative fitting - Fitting may vary depending on support selected



## Print pattern SCOURTIN



SCOURTIN Tourterelle  
138



SCOURTIN Titanium 98



SCOURTIN Lagon 110



SCOURTIN Gris 97