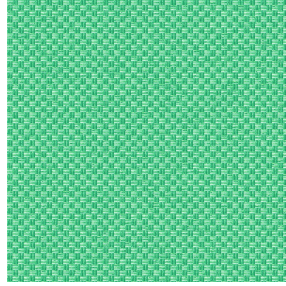




OPAQ BPI 00  
Printing support



CHARLOTTE Printemps 130  
Print pattern



## Printing support **OPAQ BPI 00** Print pattern **CHARLOTTE Printemps 130**

Unclassified blackout print support

### Technical properties

**Applications** Roman blinds - Panel curtains - Lining - Curtains

**Composition** 100% polyester with white flocked acrylic backing

**Weight** 280 g/m<sup>2</sup>

**Width** 280 cm

**Fabric direction** Room High Direction

**Fitting** ↔ 0,0 cm ↓ 0,0 cm

**Maintenance advice**     

**Label**

**Minimum order** 25 linear(s) metter(s)



Visual not taking into account the printing medium, the final rendering may vary according to the chosen medium.

## Technical characteristics

### Optical index

|                      |             |
|----------------------|-------------|
| Light reflexion :    | <b>82 %</b> |
| Light absorption :   | <b>18 %</b> |
| Light transmission : | <b>0 %</b>  |

### Thermal index

|                      |                        |
|----------------------|------------------------|
| Solar reflexion :    | <b>74 %</b>            |
| Solar absorption :   | <b>26 %</b>            |
| Solar transmission : | <b>0 %</b>             |
| UV transmission :    | <b>0 %</b>             |
| Gtot :               | <b>Gt 33 % Fc 55 %</b> |

### Resilience

|                               |             |
|-------------------------------|-------------|
| Lightfastness (units Class/8) | <b>5</b>    |
| Dimensional Stability (%)     |             |
| Warp                          | <b>-0,5</b> |
| Weft                          | <b>0</b>    |
| Breaking Elongation           |             |
| Warp                          | <b>26</b>   |
| Weft                          | <b>15</b>   |
| Breaking load (daN)           |             |
| Warp                          | <b>62</b>   |
| Weft                          | <b>31</b>   |

# Print pattern CHARLOTTE



CHARLOTTE Absinthe  
132



CHARLOTTE Anis 62



CHARLOTTE Beige 63



CHARLOTTE Bouteille  
101



CHARLOTTE Brume 47



CHARLOTTE Cerise 66



CHARLOTTE Chamois  
111



CHARLOTTE Chataigne  
55



CHARLOTTE Chaudron  
118



CHARLOTTE Chocolat  
70



CHARLOTTE Citrouille  
136



CHARLOTTE Cobalt 114



CHARLOTTE Crepuscule  
45



CHARLOTTE Cuivre 50



CHARLOTTE Ebene 124



CHARLOTTE Ficelle 09



CHARLOTTE Fiesta 131



CHARLOTTE Grenat 56



CHARLOTTE Gris 97



CHARLOTTE Hortensia  
134

**drapilux**  
By Sotexpro

DRAPILUX GmbH - Hofenstraße 3, 77694 Kehl - Deutschland

Non-contractual photos and colors - Indicative fitting - Fitting may vary depending on support selected

# Print pattern CHARLOTTE



CHARLOTTE Lagon 110



CHARLOTTE Lilas 19



CHARLOTTE Lin 11



CHARLOTTE Maïs 37



CHARLOTTE Melon 22



CHARLOTTE Menthe  
122



CHARLOTTE Mordore  
133



CHARLOTTE Mousse 92



CHARLOTTE Noir 10



CHARLOTTE Océan 91



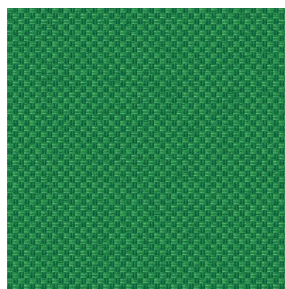
CHARLOTTE Opéra 104



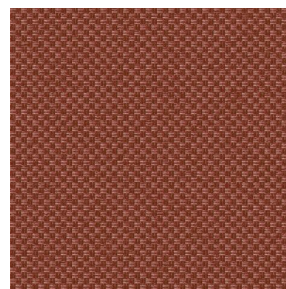
CHARLOTTE Orange 15



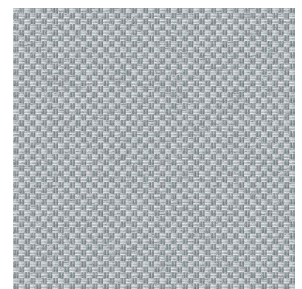
CHARLOTTE Pacifique  
54



CHARLOTTE Prairie 125



CHARLOTTE Sienne 29



CHARLOTTE Souris 31



CHARLOTTE Terre 107



CHARLOTTE Tilleul 103



CHARLOTTE Vieux rose  
64



CHARLOTTE Violine 105

**drapilux**  
By Sotexpro

DRAPILUX GmbH - Hafenstraße 3, 77694 Kehl - Deutschland

Non-contractual photos and colors - Indicative fitting - Fitting may vary depending on support selected