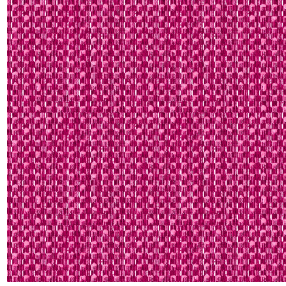




**OPAQ BPI 00**  
Printing support



**RIVE Fuchsia 33**  
Print pattern



## Printing support **OPAQ BPI 00** Print pattern **RIVE Fuchsia 33**

Unclassified blackout print support

### Technical properties

**Applications** Roman blinds - Panel curtains - Lining - Curtains


**Composition** 100% polyester with white flocked acrylic backing

**Weight** 280 g/m<sup>2</sup>

**Width** 280 cm

**Fabric direction** Room High Direction

**Fitting** ↔ cm ↓ cm

**Maintenance advice**     

**Label**

**Minimum order** 25 linear(s) meter(s)

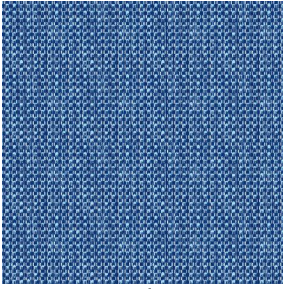


Visual not taking into account the printing medium, the final rendering may vary according to the chosen medium.

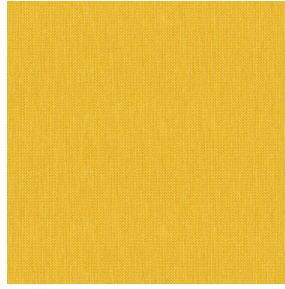
## Technical characteristics

Optical index	Light reflexion :	<b>82 %</b>
	Light absorption :	<b>18 %</b>
	Light transmission :	<b>0 %</b>
Thermal index	Solar reflexion :	<b>74 %</b>
	Solar absorption :	<b>26 %</b>
	Solar transmission :	<b>0 %</b>
	UV transmission :	<b>0 %</b>
	Gtot :	<b>Gt 33 % Fc 55 %</b>
Resilience	Lightfastness (units Class/8)	<b>5</b>
	Dimensional Stability (%)	
	Warp	<b>-0,5</b>
	Weft	<b>0</b>
	Breaking Elongation	
	Warp	<b>26</b>
	Weft	<b>15</b>
	Breaking load (daN)	
Warp	<b>62</b>	
Weft	<b>31</b>	

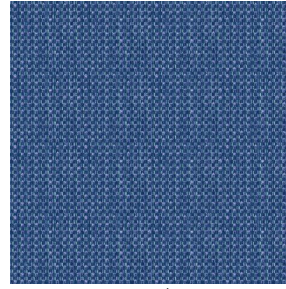
## Print pattern RIVE



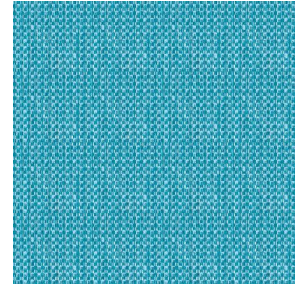
RIVE Bleu 41



RIVE Jaune 46



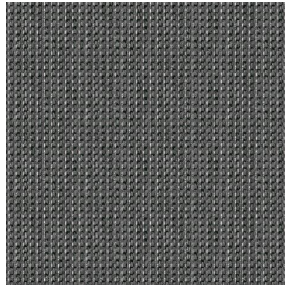
RIVE Océan 91



RIVE Turquoise 53



RIVE Sable 67



RIVE Taupe 95



RIVE Gris 97

**drapilux**  
By Sotexpro

DRAPILUX GmbH - Hafenstraße 3, 77694 Kehl - Deutschland

Non-contractual photos and colors - Indicative fitting - Fitting may vary depending on support selected