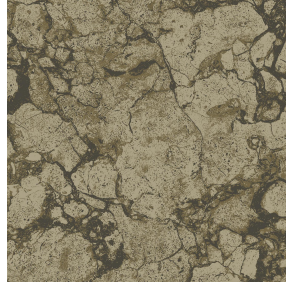


NOSUN BPI 00
Printing support



CARRARA Chamois 111
Print pattern

Printing support **NOSUN BPI 00** Print pattern **CARRARA Chamois 111**

Support pour impression effet natté reliéfé occultant grâce à son envers floqué acrylique blanc

Technical properties

Applications Roman blinds - Panel curtains - Curtains

Composition Polyester/acrylique

Weight 400 g/m²

Width 280 cm

Fabric direction Room High Direction

Fitting ↔ 0.0 cm ↓ 0.0 cm

Maintenance advice     

Label

Minimum order 25 linear(s) meter(s)



Visual not taking into account the printing medium, the final rendering may vary according to the chosen medium.

Technical characteristics

Resilience

Dimensional Stability (%)

Warp 0

Weft 0

Breaking Elongation

Warp 40

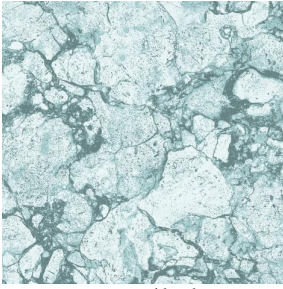
Weft 32

Breaking load (daN)

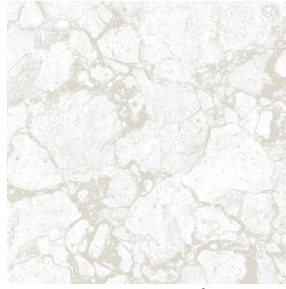
Warp 190

Weft 93

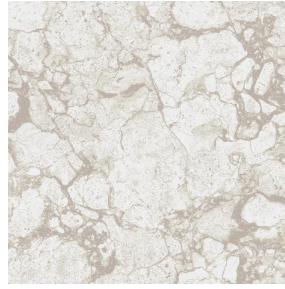
Print pattern CARRARA



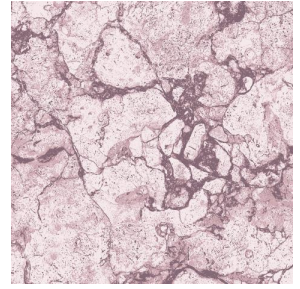
CARRARA Céladon 135



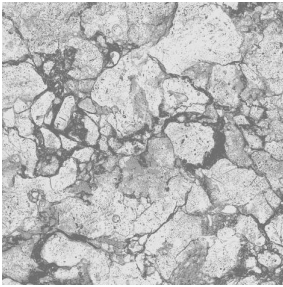
CARRARA Perle 96



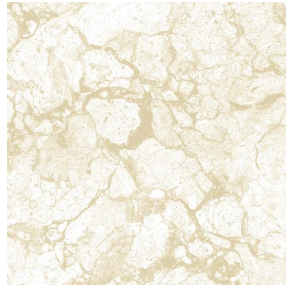
CARRARA Lin 11



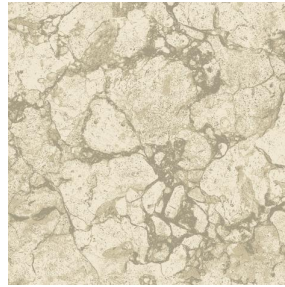
CARRARA Vieux rose 64



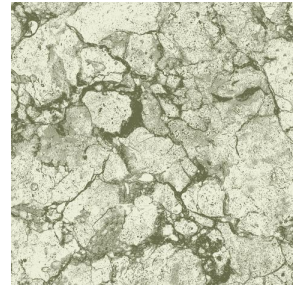
CARRARA Gris 97



CARRARA Naturel 26



CARRARA Ficelle 09



CARRARA Absinthe 132