



NOSUN BPI 00  
Printing support



METIS Noir 10  
Print pattern



## Printing support **NOSUN BPI 00** Print pattern **METIS Noir 10**

Support pour impression effet natté reliéé occultant grâce à son envers floqué acrylique blanc

### Technical properties

**Applications** Roman blinds - Panel curtains - Curtains

**Composition** Polyester/acrylique

**Weight** 400 g/m<sup>2</sup>

**Width** 280 cm

**Fabric direction** Room High Direction

**Fitting** ↔ 0.0 cm ↓ 0.0 cm

**Maintenance advice**     

**Label**

**Minimum order** 25 linear(s) meter(s)



Visual not taking into account the printing medium, the final rendering may vary according to the chosen medium.

## Technical characteristics

Resilience

Dimensional Stability (%)

Warp 0

Weft 0

Breaking Elongation

Warp 40

Weft 32

Breaking load (daN)

Warp 190

Weft 93

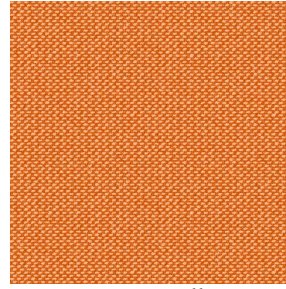
# Print pattern METIS



METIS Gentiane 16



METIS Absinthe 132



METIS Citrouille 136



METIS Chanvre 72



METIS Gris 97



METIS Bergamote 121



METIS Violine 105



METIS Perle 96



METIS Céladon 135



METIS Lin 11



METIS Sienne 29



METIS Lagon 110



METIS Cobalt 114



METIS Framboise 81



METIS Abricot 08



METIS Chamois 111



METIS Ivoire 115



METIS Ficelle 09



METIS Rose 129



METIS Parme 79

**drapilux**  
By Sotexpro

DRAPILUX GmbH - Hofenstraße 3, 77694 Kehl - Deutschland

Non-contractual photos and colors - Indicative fitting - Fitting may vary depending on support selected

## Print pattern METIS



METIS Cactus 36



METIS Hortensia 134



METIS Naturel 26



METIS Chaudron 118

**drapilux**  
By Sotexpro

DRAPILUX GmbH - Hafenstraße 3, 77694 Kehl - Deutschland

Non-contractual photos and colors - Indicative fitting - Fitting may vary depending on support selected