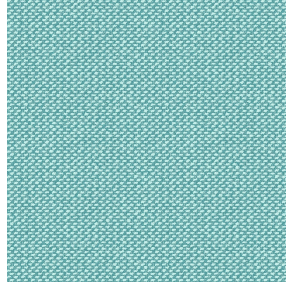




NORA Gris envers blanc 63  
Printing support



METIS Lagon 110  
Print pattern



Visual not taking into account the printing medium, the final rendering may vary according to the chosen medium.

## Printing support **NORA Gris envers blanc 63**

### Print pattern **METIS Lagon 110**

Support occultant pour impression, imprimable des 2 côtés dont un texturé.

#### Technical properties

**Applications** Roman blinds - Panel curtains - Curtains

**Composition** Polyester/acrylique

**Weight** 380 g/m<sup>2</sup>

**Width** 280 cm

**Fabric direction** Room High Direction

**Fitting** ↔ 0,0 cm ↓ 0,0 cm

**Maintenance advice**     

**Label**

**Minimum order** 25 linear(s) metter(s)

## Technical characteristics

Resilience

Dimensional Stability (%)

Warp -0,5

Weft -0,5

Breaking Elongation

Warp 28

Weft 12

Breaking load (daN)

Warp 140

Weft 57

# Print pattern METIS



METIS Gentiane 16



METIS Absinthe 132



METIS Noir 10



METIS Citrouille 136



METIS Chanvre 72



METIS Gris 97



METIS Bergamote 121



METIS Violine 105



METIS Perle 96



METIS Céladon 135



METIS Lin 11



METIS Sienne 29



METIS Cobalt 114



METIS Framboise 81



METIS Abricot 08



METIS Chamois 111



METIS Ivoire 115



METIS Ficelle 09



METIS Rose 129



METIS Parme 79

**drapilux**  
By Sotexpro

DRAPILUX GmbH - Hofenstraße 3, 77694 Kehl - Deutschland

Non-contractual photos and colors - Indicative fitting - Fitting may vary depending on support selected

## Print pattern METIS



METIS Cactus 36



METIS Hortensia 134



METIS Naturel 26



METIS Chaudron 118