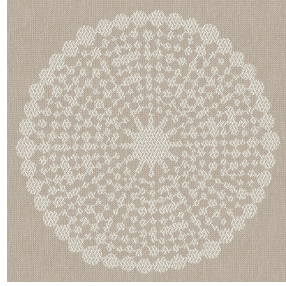




NOCTWIN BPI 00
Printing support



ANGELE Sable 67
Print pattern



Printing support **NOCTWIN BPI 00** Print pattern **ANGELE Sable 67**

Support occultant pour impression, imprimable des 2 côtés.

Technical properties



Flame retardant

Applications Roman blinds - Panel curtains - Curtains

Composition Polyester/acrylique envers floqué

Weight 300 g/m²

Width 280 cm

Fabric direction Room High Direction

Fitting ↔ 30.0 cm ↓ 30.0 cm

Maintenance advice     

Label

Minimum order 25 linear(s) meter(s)



Visual not taking into account the printing medium, the final rendering may vary according to the chosen medium.

Technical characteristics

Flame retardant

B1 / IMO PASS

Resilience

Lightfastness (units Class/8)

6

Dimensional Stability (%)

Warp

-1

Weft

0

Breaking Elongation

Warp

31

Weft

8

Breaking load (daN)

Warp

120

Weft

43

Print pattern ANGELE



ANGELE Océan 91



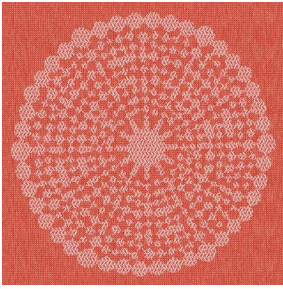
ANGELE Taupe 95



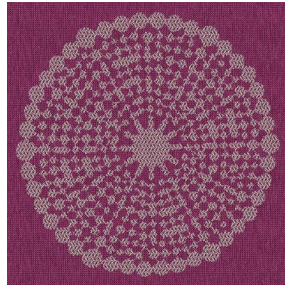
ANGELE Anis 62



ANGELE Fuchsia 33



ANGELE Orange 15



ANGELE Prune 84



ANGELE Turquoise 53



ANGELE Vert 24