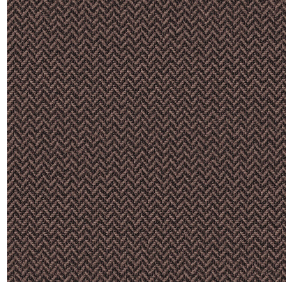




**NOCTWIN BPI 00**  
Printing support



**SCOURTIN Brun 23**  
Print pattern



Visual not taking into account the printing medium, the final rendering may vary according to the chosen medium.

# Printing support **NOCTWIN BPI 00** Print pattern **SCOURTIN Brun 23**

Support occultant pour impression, imprimable des 2 côtés.

## Technical properties



Flame retardant

**Applications** Roman blinds - Panel curtains - Curtains

**Composition** Polyester/acrylique envers floqué

**Weight** 300 g/m<sup>2</sup>

**Width** 280 cm

**Fabric direction** Room High Direction

**Fitting** ↔ cm ↓ cm

**Maintenance advice**     

**Label**

**Minimum order** 25 linear(s) meter(s)

## Technical characteristics

Flame retardant

B1 / IMO PASS

Resilience

Lightfastness (units Class/8)

6

Dimensional Stability (%)

Warp

-1

Weft

0

Breaking Elongation

Warp

31

Weft

8

Breaking load (daN)

Warp

120

Weft

43



# Print pattern SCOURTIN



SCOURTIN Beige 63



SCOURTIN Fuchsia 33



SCOURTIN Sapin 126



SCOURTIN Bergamote  
121



SCOURTIN Anthracite  
38



SCOURTIN Violette 105



SCOURTIN Pacifique 54



SCOURTIN Rose 129



SCOURTIN Blanc 01



SCOURTIN Lin 11



SCOURTIN Naturel 26



SCOURTIN Citrouille  
136



SCOURTIN Turquoise 53



SCOURTIN Hortensia  
134



SCOURTIN Orange 123



SCOURTIN Rubis 59



SCOURTIN Ficelle 09



SCOURTIN Maïs 37



SCOURTIN Céladon 135



SCOURTIN Ebene 113

**drapilux**  
By Sotexpro

DRAPILUX GmbH - Hofenstraße 3, 77694 Kehl - Deutschland

Non-contractual photos and colors - Indicative fitting - Fitting may vary depending on support selected



## Print pattern SCOURTIN



SCOURTIN Tourterelle  
138



SCOURTIN Titanium 98



SCOURTIN Lagon 110



SCOURTIN Gris 97