



NOCTWIN BPI 00
Printing support



SALIN Rouge 21
Print pattern



Printing support **NOCTWIN BPI 00** Print pattern **SALIN Rouge 21**

Support occultant pour impression, imprimable des 2 côtés.

Technical properties



Flame retardant

Applications Roman blinds - Panel curtains - Curtains

Composition Polyester/acrylique envers floqué

Weight 300 g/m²

Width 280 cm

Fabric direction Room High Direction

Fitting ↔ 0.0 cm ↓ 0.0 cm

Maintenance advice     

Label

Minimum order 25 linear(s) meter(s)



Visual not taking into account the printing medium, the final rendering may vary according to the chosen medium.

Technical characteristics

Flame retardant

B1 / IMO PASS

Resilience

Lightfastness (units Class/8)	6
Dimensional Stability (%)	
Warp	-1
Weft	0
Breaking Elongation	
Warp	31
Weft	8
Breaking load (daN)	
Warp	120
Weft	43

Print pattern SALIN



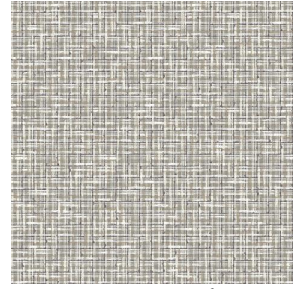
SALIN Abricot 08



SALIN Anis 62



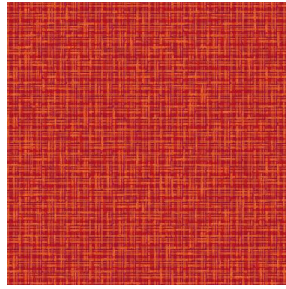
SALIN Fuchsia 33



SALIN Naturel 26



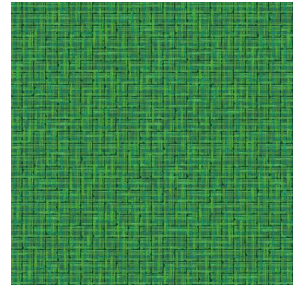
SALIN Océan 91



SALIN Orange 15



SALIN Turquoise 53



SALIN Vert 24