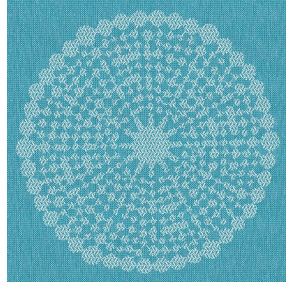




NOCTWIN BPI 00
Printing support



ANGELE Turquoise 53
Print pattern



Printing support **NOCTWIN BPI 00** Print pattern **ANGELE Turquoise 53**

Support occultant pour impression, imprimable des 2 côtés.

Technical properties



Flame retardant

Applications Roman blinds - Panel curtains - Curtains

Composition Polyester/acrylique envers floqué

Weight 300 g/m²

Width 280 cm

Fabric direction Room High Direction

Fitting ↔ 30.0 cm ↓ 30.0 cm

Maintenance advice     

Label

Minimum order 25 linear(s) meter(s)



Visual not taking into account the printing medium, the final rendering may vary according to the chosen medium.

Technical characteristics

Flame retardant

B1 / IMO PASS

Resilience

| | |
|-------------------------------|-----|
| Lightfastness (units Class/8) | 6 |
| Dimensional Stability (%) | |
| Warp | -1 |
| Weft | 0 |
| Breaking Elongation | |
| Warp | 31 |
| Weft | 8 |
| Breaking load (daN) | |
| Warp | 120 |
| Weft | 43 |

Print pattern ANGELE



ANGELE Océan 91



ANGELE Taupe 95



ANGELE Anis 62



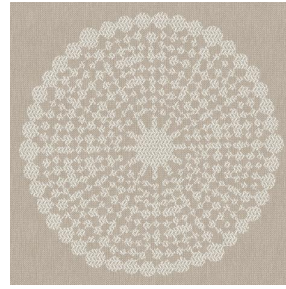
ANGELE Fuchsia 33



ANGELE Orange 15



ANGELE Prune 84



ANGELE Sable 67



ANGELE Vert 24