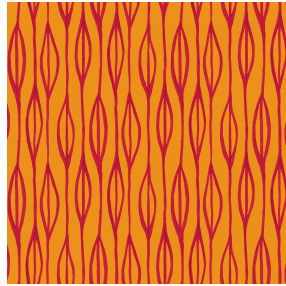




NOCTEA BPI 00
Printing support



YENDI Sanguine 05
Print pattern



Printing support **NOCTEA BPI 00** Print pattern **YENDI Sanguine 05**

This fabric is used as a print medium.

Technical properties



Flame retardant

Applications Roman blinds - Roller blinds - Panel curtains - Lining - Curtains

Composition 100% polyester with white flocked acrylic backing

Weight 310 g/m²

Width 280 cm

Fabric direction Room High Direction

Fitting ↔ 24.0 cm ↓ 20.0 cm

Maintenance advice     

Label

Minimum order 25 linear(s) meter(s)



Visual not taking into account the printing medium, the final rendering may vary according to the chosen medium.

Technical characteristics

Flame retardant

M1 / BS 5867 TYPE C / B1 / IMO PASS

Optical index

Light reflexion : **71 %**

Light absorption : **29 %**

Light transmission : **0 %**

Thermal index

Solar reflexion : **66 %**

Solar absorption : **34 %**

Solar transmission : **0 %**

UV transmission : **0 %**

Gtot : **Gt 35 % Fc 60 %**

Resilience

Lightfastness (units Class/8) **4**

Dimensional Stability (%)

Warp **-0,5**

Weft **0**

Breaking Elongation

Warp **19**

Weft **22**

Breaking load (daN)

Warp **37**

Weft **57**

Print pattern YENDI



YENDI Anis 62



YENDI Lagon 110



YENDI Lilas 19



YENDI Opéra 104



YENDI Pacifique 54



YENDI Sapin 126



YENDI Soleil 127



YENDI Terre 107

drapilux
By Sotexpro

DRAPILUX GmbH - Hafenstraße 3, 77694 Kehl - Deutschland

Non-contractual photos and colors - Indicative fitting - Fitting may vary depending on support selected