



NOCTEA BPI 00
Printing support



ANATOLE Naturel 26
Print pattern



Printing support NOCTEA BPI 00 Print pattern ANATOLE Naturel 26

This fabric is used as a print medium.

Technical properties



Flame retardant

Applications Roman blinds - Roller blinds - Panel curtains - Lining - Curtains

Composition 100% polyester with white flocked acrylic backing

Weight 310 g/m²

Width 280 cm

Fabric direction Room High Direction

Fitting ↔ cm ↓ cm

Maintenance advice

Label

Minimum order 25 linear(s) meter(s)



Visual not taking into account the printing medium, the final rendering may vary according to the chosen medium.

Technical characteristics

Flame retardant

M1 / BS 5867 TYPE C / B1 / IMO PASS

Optical index

Light reflexion : 71 %

Light absorption : 29 %

Light transmission : 0 %

Thermal index

Solar reflexion : 66 %

Solar absorption : 34 %

Solar transmission : 0 %

UV transmission : 0 %

Gtot : Gt 35 % Fc 60 %

Resilience

Lightfastness (units Class/8) 4

Dimensional Stability (%)

Warp -0,5

Weft 0

Breaking Elongation

Warp 19

Weft 22

Breaking load (daN)

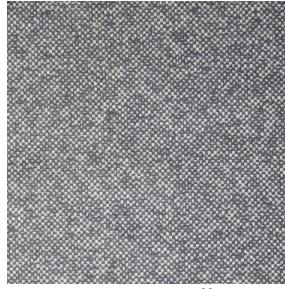
Warp 37

Weft 57

Print pattern ANATOLE



ANATOLE lin 11



ANATOLE Ficelle 09



ANATOLE Celadon 135



ANATOLE Océan 91



ANATOLE Titanium 98



ANATOLE Cactus 36



ANATOLE mousse 92



ANATOLE Or 94



ANATOLE Chaudron
118



ANATOLE Amarante
108



ANATOLE Taupe 95