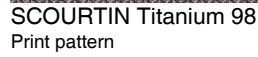


Visual not taking into account the printing medium, the final rendering may vary according to the chosen medium.



Printing support **NOCTEA BPI 00**
Print pattern **SCOURTIN Titanium 98**

This fabric is used as a print medium.



Flame retardant

Applications Roman blinds - Roller blinds - Panel curtains - Lining - Curtains

Composition 100% polyester with white flocked acrylic backing

Weight 310 g/m²

Width 280 cm

Fabric direction Room High Direction

Fitting $\leftrightarrow_{\text{cm}}$ \updownarrow_{cm}

Maintenance advice

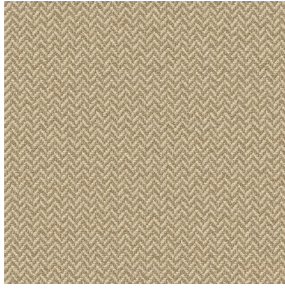
Label

Minimum order 25 linear(s) metter(s)

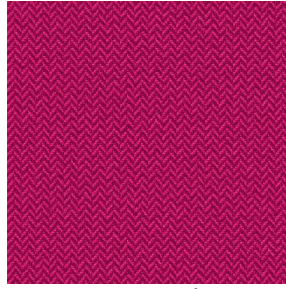
Technical characteristics

Flame retardant	M1 / BS 5867 TYPE C / B1 / IMO PASS	
Optical index	Light reflexion :	71 %
	Light absorption :	29 %
	Light transmission :	0 %
Thermal index	Solar reflexion :	66 %
	Solar absorption :	34 %
	Solar transmission :	0 %
	UV transmission :	0 %
	Gtot :	Gt 35 % Fc 60 %
Resilience	Lightfastness (units Class/8)	4
	Dimentional Stability (%)	
	Warp	-0,5
	Weft	0
	Breaking Elongation	
	Warp	19
	Weft	22
	Breaking load (daN)	
	Warp	37
	Weft	57

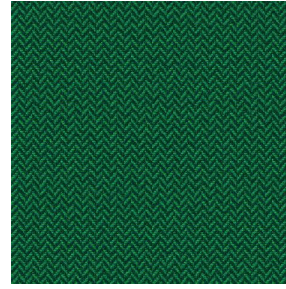
Print pattern SCOURTIN



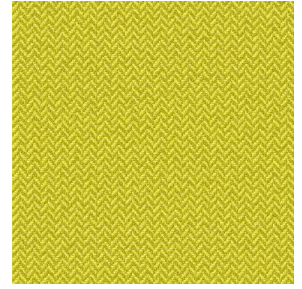
SCOURTIN Beige 63



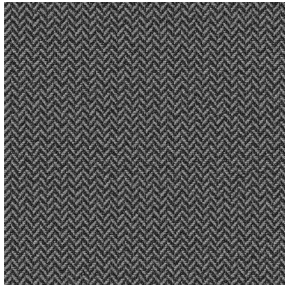
SCOURTIN Fuchsia 33



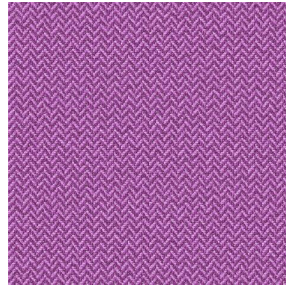
SCOURTIN Sapin 126



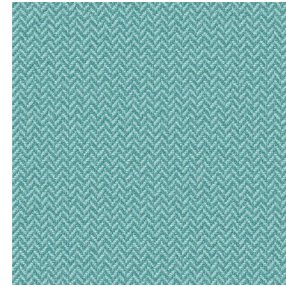
SCOURTIN Bergamote
121



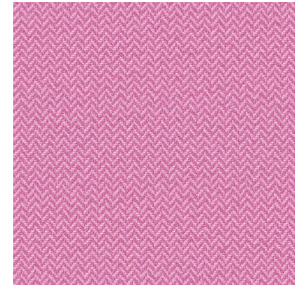
SCOURTIN Anthracite
38



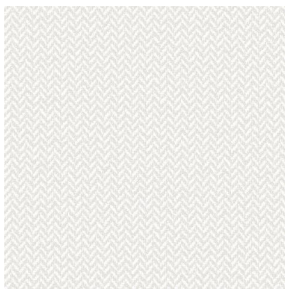
SCOURTIN Violine 105



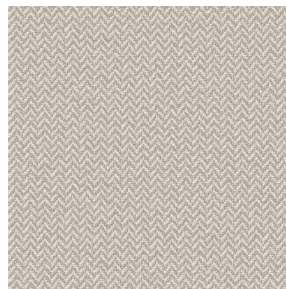
SCOURTIN Pacifique 54



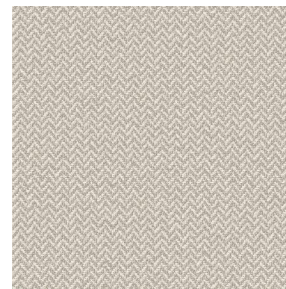
SCOURTIN Rose 129



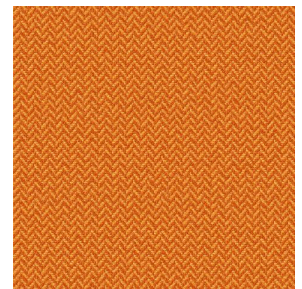
SCOURTIN Blanc 01



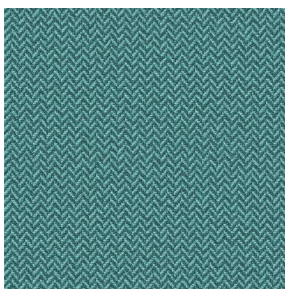
SCOURTIN Lin 11



SCOURTIN Naturel 26



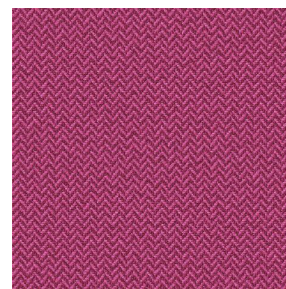
SCOURTIN Citrouille
136



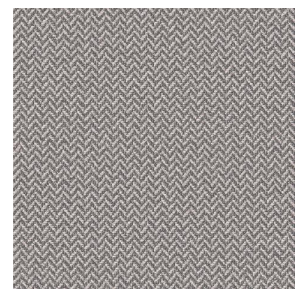
SCOURTIN Turquoise 53



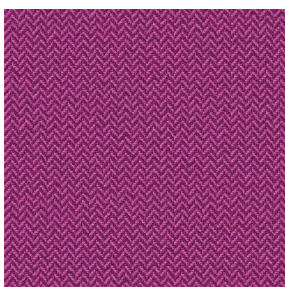
SCOURTIN Brun 23



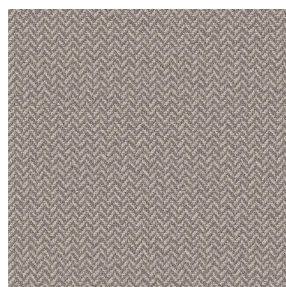
SCOURTIN Hortensia
134



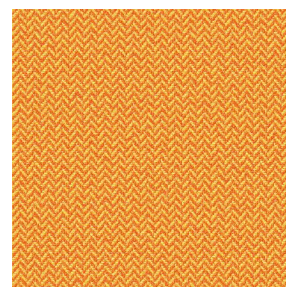
SCOURTIN Orange 123



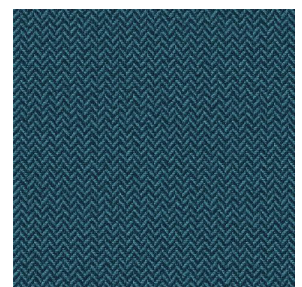
SCOURTIN Rubis 59



SCOURTIN Ficelle 09



SCOURTIN Maïs 37



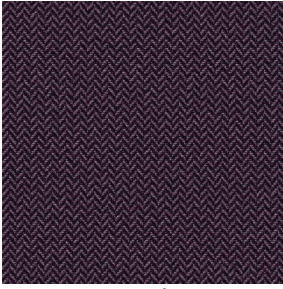
SCOURTIN Céladon 135

drapilux
By Sotexpro

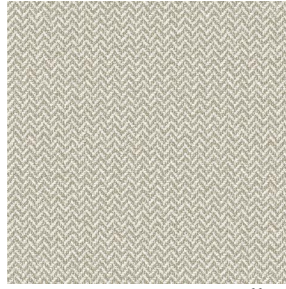
DRAPILUX GmbH - Hofenstraße 3, 77694 Kehl - Deutschland

Non-contractual photos and colors - Indicative fitting - Fitting may vary depending on support selected

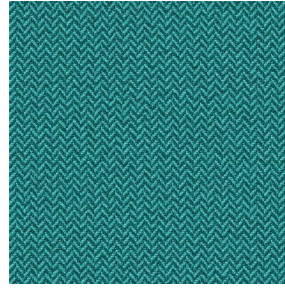
Print pattern SCOURTIN



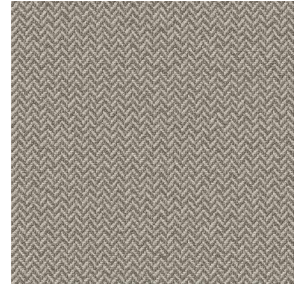
SCOURTIN Ebene 113



SCOURTIN Tourterelle
138



SCOURTIN Lagon 110



SCOURTIN Gris 97

drapilux
By Sotexpro

DRAPILUX GmbH - Hafenstraße 3, 77694 Kehl - Deutschland

Non-contractual photos and colors - Indicative fitting - Fitting may vary depending on support selected