

This fabric is used as a print medium.

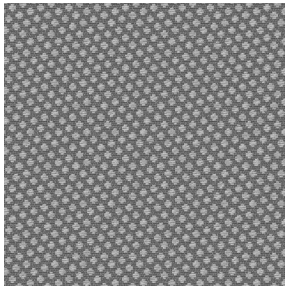
Flame retardant

Minimum order 25 linear(s) metter(s)

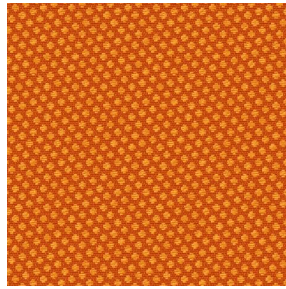
## Weft 57



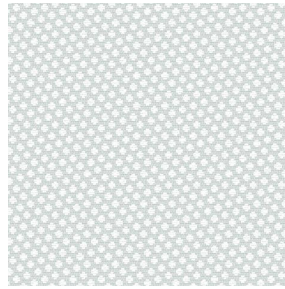
# Print pattern GONIDIE



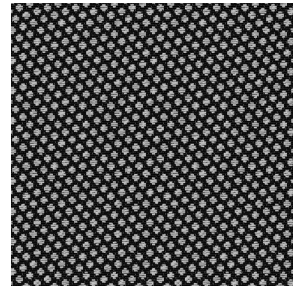
GONIDIE Souris 31



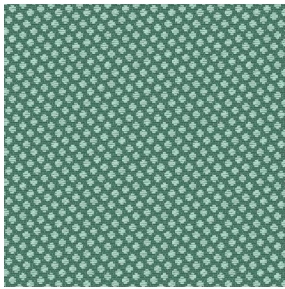
GONIDIE Citrouille 136



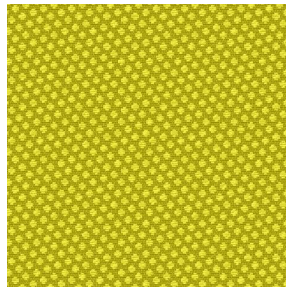
GONIDIE Glacier 43



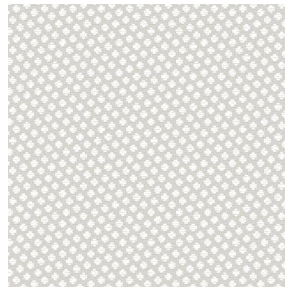
GONIDIE Noir 10



GONIDIE Céladon 135



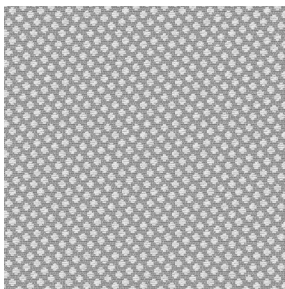
GONIDIE Anis 62



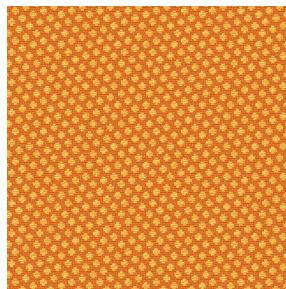
GONIDIE Perle 96



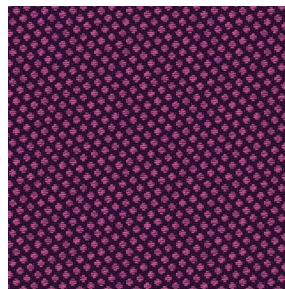
GONIDIE Mousse 92



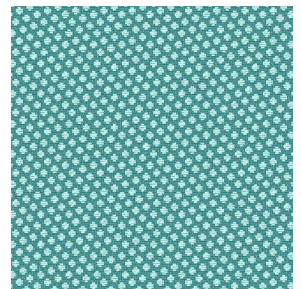
GONIDIE Tourterelle  
138



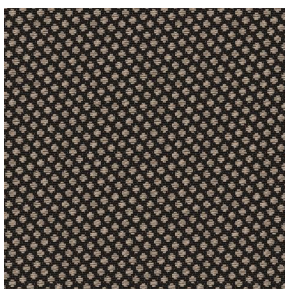
GONIDIE Brique 42



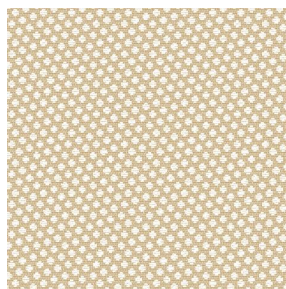
GONIDIE Opéra 104



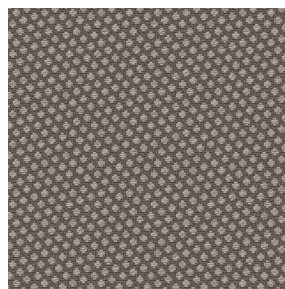
GONIDIE Pacifique 54



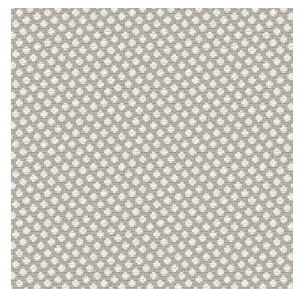
GONIDIE Brun 23



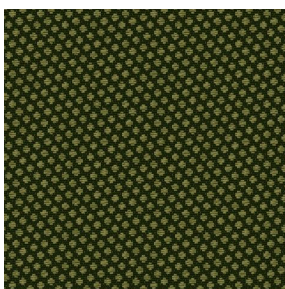
GONIDIE Crème 32



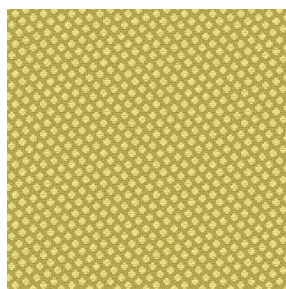
GONIDIE Taupe 95



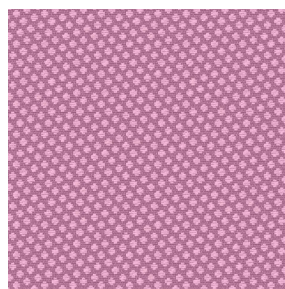
GONIDIE Lin 11



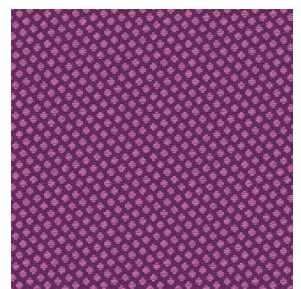
GONIDIE Lierre 124



GONIDIE Bergamote  
121



GONIDIE Hortensia 134



GONIDIE Vieux rose 64

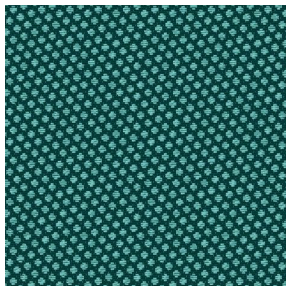
**drapilux**  
By Sotexpro

DRAPILUX GmbH - Hafenstraße 3, 77694 Kehl - Deutschland

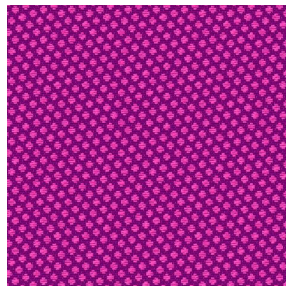
Non-contractual photos and colors - Indicative fitting - Fitting may vary depending on support selected



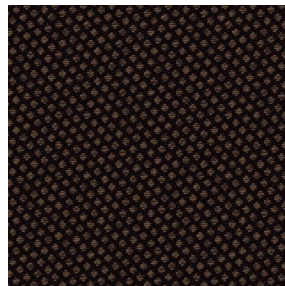
## Print pattern GONIDIE



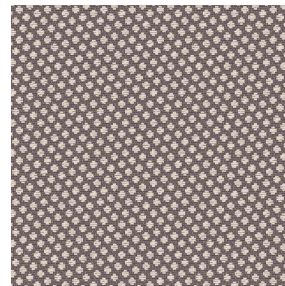
GONIDIE Emeraude 88



GONIDIE Fuchsia 33



GONIDIE Ebene 113



GONIDIE Ficelle 09

**drapilux**  
by Sotexpro

DRAPILUX GmbH - Hafenstraße 3, 77694 Kehl - Deutschland

Non-contractual photos and colors - Indicative fitting - Fitting may vary depending on support selected