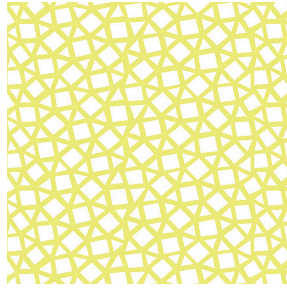


**NOCLIN NATUREL 26**  
Printing support



**PEKKA cactus 36**  
Print pattern

## Printing support **NOCLIN NATUREL 26**

### Print pattern **PEKKA cactus 36**

Blackout double-side, linen and textured effect, the Noclin is also available as a printing support, to bring depth and relief to your patterns, please note : the beige background may modify the final appearance.

#### Technical properties



Flame retardant



Thermal

**Applications** Roman blinds - Panel curtains - Curtains

**Composition** Polyester enduction acrylique

**Weight** 380 g/m<sup>2</sup>

**Width** 280 cm

**Fabric direction** Room High Direction

**Fitting** ↔ 18.0 cm ↓ 6.0 cm

**Maintenance advice**    

**Label**

**Minimum order** 25 linear(s) metter(s)



Visual not taking into account the printing medium, the final rendering may vary according to the chosen medium.

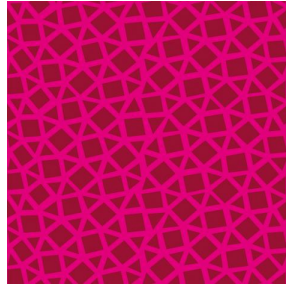
## Technical characteristics

Flame retardant	B1 / IMO PASS	
Optical index	Light reflexion :	53 %
	Light absorption :	47 %
	Light transmission :	0 %
Thermal index	Solar reflexion :	64 %
	Solar absorption :	36 %
	Solar transmission :	0 %
	UV transmission :	0 %
	Gtot :	Gt 36 % Fc 61 %
	Resilience	Lightfastness (units Class/8)
Dimensional Stability (%)		
Warp		-1
Weft		-1
Breaking Elongation		
Warp		48
Weft		72
Breaking load (daN)		
Warp		51
Weft	84	

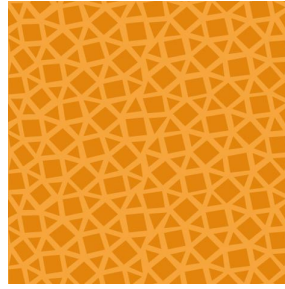
# Print pattern PEKKA



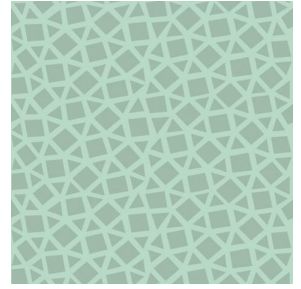
PEKKA Anis 62



PEKKA Grenat 56



PEKKA Orange 15



PEKKA Turquoise 53