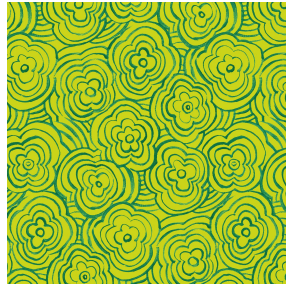




NOCLIN NATUREL 26
Printing support



ONDES Anis 62
Print pattern



Visual not taking into account the printing medium, the final rendering may vary according to the chosen medium.

Printing support **NOCLIN NATUREL 26**

Print pattern **ONDES Anis 62**

Blackout double-side, linen and textured effect, the Noclin is also available as a printing support, to bring depth and relief to your patterns, please note : the beige background may modify the final appearance.

Technical properties



Flame retardant



Thermal

Applications Roman blinds - Panel curtains - Curtains

Composition Polyester enduction acrylique

Weight 380 g/m²

Width 280 cm

Fabric direction Room High Direction

Fitting ↔ 25.0 cm ↓ 20.0 cm

Maintenance advice    

Label

Minimum order 25 linear(s) metter(s)

Technical characteristics

Flame retardant	B1 / IMO PASS		
Optical index	Light reflexion :	53 %	
	Light absorption :	47 %	
	Light transmission :	0 %	
Thermal index	Solar reflexion :	64 %	
	Solar absorption :	36 %	
	Solar transmission :	0 %	
	UV transmission :	0 %	
	Gtot :	Gt 36 % Fc 61 %	
	Resilience	Lightfastness (units Class/8)	4
Dimentional Stability (%)		Warp	-1
		Weft	-1
Breaking Elongation		Warp	48
		Weft	72
Breaking load (daN)		Warp	51
		Weft	84

Print pattern ONDES



ONDES Opéra 104



ONDES Turquoise 53



ONDES Violine 105



ONDES glacier 43

drapilux
By Sotexpro

DRAPILUX GmbH - Hafenstraße 3, 77694 Kehl - Deutschland

Non-contractual photos and colors - Indicative fitting - Fitting may vary depending on support selected