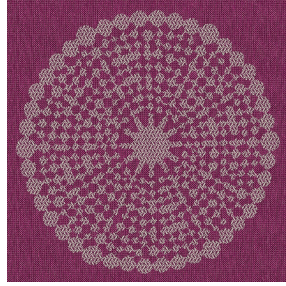




NOCLIN NATUREL 26
Printing support



ANGELE Prune 84
Print pattern



Visual not taking into account the printing medium, the final rendering may vary according to the chosen medium.

Printing support **NOCLIN NATUREL 26**

Print pattern **ANGELE Prune 84**

Blackout double-side, linen and textured effect, the Noclin is also available as a printing support, to bring depth and relief to your patterns, please note : the beige background may modify the final appearance.

Technical properties



Flame retardant



Thermal

Applications Roman blinds - Panel curtains - Curtains

Composition Polyester enduction acrylique

Weight 380 g/m²

Width 280 cm

Fabric direction Room High Direction

Fitting ↔ 30.0 cm ↓ 30.0 cm

Maintenance advice    

Label

Minimum order 25 linear(s) metter(s)

Technical characteristics

Flame retardant	B1 / IMO PASS		
Optical index	Light reflexion :	53 %	
	Light absorption :	47 %	
	Light transmission :	0 %	
Thermal index	Solar reflexion :	64 %	
	Solar absorption :	36 %	
	Solar transmission :	0 %	
	UV transmission :	0 %	
	Gtot :	Gt 36 % Fc 61 %	
Resilience	Lightfastness (units Class/8)	4	
	Dimentional Stability (%)	Warp	-1
		Weft	-1
	Breaking Elongation	Warp	48
		Weft	72
	Breaking load (daN)	Warp	51
		Weft	84

Print pattern ANGELE



ANGELE Océan 91



ANGELE Taupe 95



ANGELE Anis 62



ANGELE Fuchsia 33



ANGELE Orange 15



ANGELE Sable 67



ANGELE Turquoise 53



ANGELE Vert 24

drapilux
By Sotexpro

DRAPILUX GmbH - Hafenstraße 3, 77694 Kehl - Deutschland

Non-contractual photos and colors - Indicative fitting - Fitting may vary depending on support selected