



NOCAV BPI 00
Printing support



NAHIA CURRY 184
Print pattern

Printing support **NOCAV BPI 00** Print pattern **NAHIA CURRY 184**

Unclassified blackout print support

Technical properties

Applications Roman blinds - Panel curtains - Curtains

Composition 100% polyester with white flocked acrylic backing

Weight 390 g/m²

Width 273 cm

Fabric direction Room High Direction

Fitting ↔ 64.0 cm ↓ 70.0 cm

Maintenance advice     

Label

Minimum order 25 linear(s) meter(s)



Visual not taking into account the printing medium, the final rendering may vary according to the chosen medium.

Technical characteristics

Resilience

Dimensional Stability (%)

Warp **0**

Weft **0**

Breaking Elongation

Warp **38**

Weft **38**

Breaking load (daN)

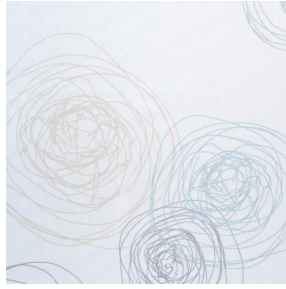
Warp **170**

Weft **120**

Print pattern NAHIA



NAHIA TURQUOISE 53



NAHIA OR 94