



NOCAV BPI 00
Printing support



MUNA gris 97
Print pattern

Printing support **NOCAV BPI 00** Print pattern **MUNA gris 97**

Unclassified blackout print support

Technical properties

Applications Roman blinds - Panel curtains - Curtains

Composition 100% polyester with white flocked acrylic backing

Weight 390 g/m²

Width 273 cm

Fabric direction Room High Direction

Fitting ↔ cm ↓ cm

Maintenance advice     

Label

Minimum order 25 linear(s) meter(s)



Visual not taking into account the printing medium, the final rendering may vary according to the chosen medium.

Technical characteristics

Resilience

Dimensional Stability (%)

Warp **0**

Weft **0**

Breaking Elongation

Warp **38**

Weft **38**

Breaking load (daN)

Warp **170**

Weft **120**

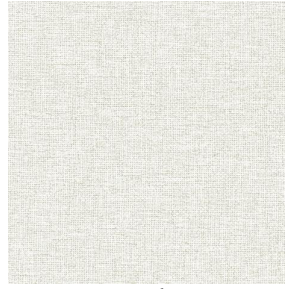
Print pattern MUNA



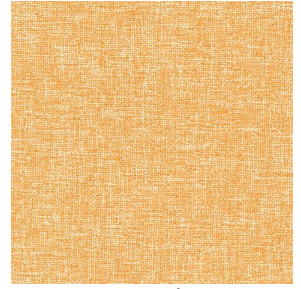
MUNA Cactus 36



MUNA soleil 90



MUNA lin 11



MUNA Melon 22



MUNA souris 31



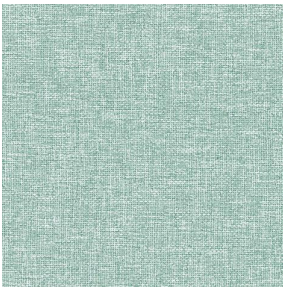
MUNA lagon 110



MUNA jade 116



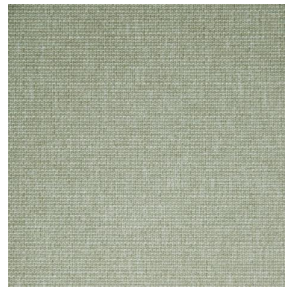
MUNA terre 107



MUNA céladon 135



MUNA Coco 142



MUNA Sable 67



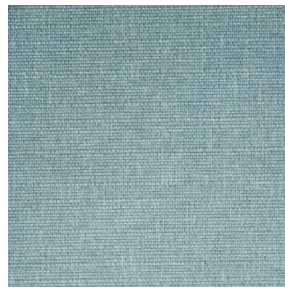
MUNA Saumon 143



MUNA Sisal 140



MUNA Tourterelle 138



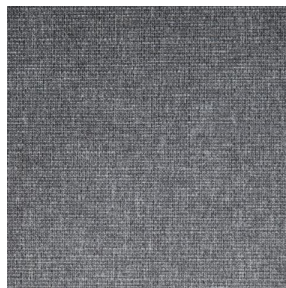
MUNA Ardoise 87



MUNA Tilleul 103



MUNA Chanvre 72



MUNA Graphite 77



MUNA Olive 61



MUNA Lierre 124

drapilux
By Sotexpro

DRAPILUX GmbH - Hafenstraße 3, 77694 Kehl - Deutschland

Non-contractual photos and colors - Indicative fitting - Fitting may vary depending on support selected

Print pattern MUNA



MUNA Indigo 144



MUNA Sienne 29



MUNA Rouge 21



MUNA Saphir 106



MUNA Violine 105



MUNA Titanium 98



MUNA Acier 18