



NOCAV BPI 00  
Printing support



ANATOLE Titanium 98  
Print pattern



# Printing support **NOCAV BPI 00** Print pattern **ANATOLE Titanium 98**

Unclassified blackout print support

## Technical properties

**Applications** Roman blinds - Panel curtains - Curtains

**Composition** 100% polyester with white flocked acrylic backing

**Weight** 390 g/m<sup>2</sup>

**Width** 273 cm

**Fabric direction** Room High Direction

**Fitting** ↔ cm ↓ cm

**Maintenance advice**     

**Label**

**Minimum order** 25 linear(s) meter(s)



Visual not taking into account the printing medium, the final rendering may vary according to the chosen medium.

## Technical characteristics

Resilience

Dimensional Stability (%)

Warp 0

Weft 0

Breaking Elongation

Warp 38

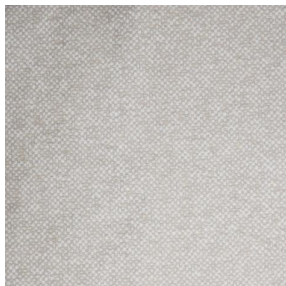
Weft 38

Breaking load (daN)

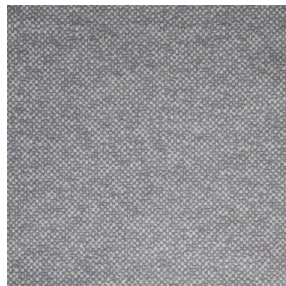
Warp 170

Weft 120

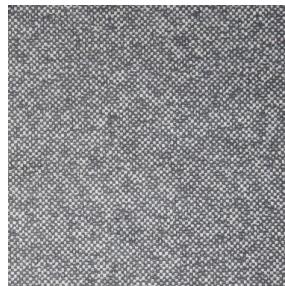
# Print pattern ANATOLE



ANATOLE Naturel 26



ANATOLE lin 11



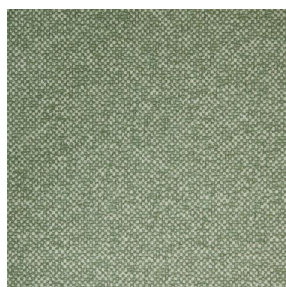
ANATOLE Ficelle 09



ANATOLE Celadon 135



ANATOLE Océan 91



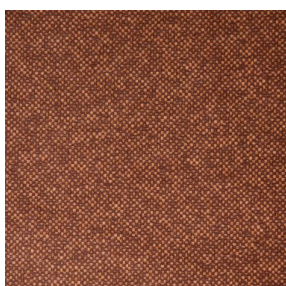
ANATOLE Cactus 36



ANATOLE mousse 92



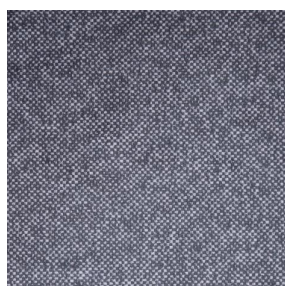
ANATOLE Or 94



ANATOLE Chaudron  
118



ANATOLE Amarante  
108



ANATOLE Taupe 95