



NOCAV BPI 00
Printing support



ONDES Opéra 104
Print pattern



Visual not taking into account the printing medium, the final rendering may vary according to the chosen medium.

Printing support **NOCAV BPI 00** Print pattern **ONDES Opéra 104**

Unclassified blackout print support

Technical properties

Applications Roman blinds - Panel curtains - Curtains


Composition 100% polyester with white flocked acrylic backing

Weight 390 g/m²

Width 273 cm

Fabric direction Room High Direction

Fitting ↔ 25.0 cm ↓ 20.0 cm

Maintenance advice     

Label

Minimum order 25 linear(s) meter(s)

Technical characteristics

Resilience

Dimensional Stability (%)

Warp **0**

Weft **0**

Breaking Elongation

Warp **38**

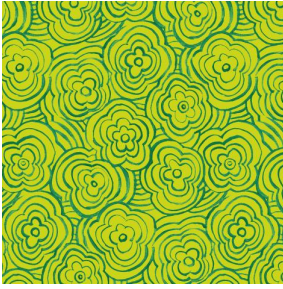
Weft **38**

Breaking load (daN)

Warp **170**

Weft **120**

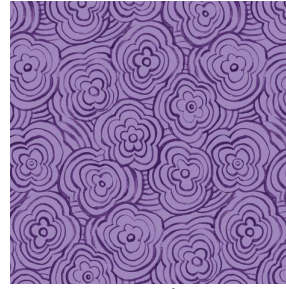
Print pattern ONDES



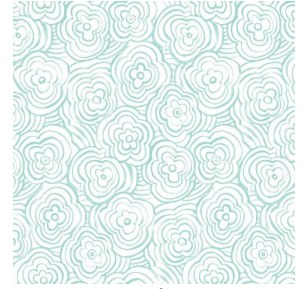
ONDES Anis 62



ONDES Turquoise 53



ONDES Violine 105



ONDES glacier 43