



**NATTE bpi 00**  
Printing support



**SCOURTIN Lin 11**  
Print pattern

## Printing support **NATTE bpi 00** Print pattern **SCOURTIN Lin 11**

This light-filtering fabric serves as a print medium.

### Technical properties



Flame retardant

**Applications** Roman blinds - Panel curtains - Bedspreads - Valences - Bed runners  
- Curtains - Cushions

**Composition** 100% FR polyester

**Weight** 230 g/m<sup>2</sup>

**Width** 280 cm

**Fabric direction** Room High Direction

**Fitting** ↔ 0,0 cm ↓ 0,0 cm

**Maintenance advice**     

**Label** France Terre Textile / OEKO-TEX STANDARD 100

**Minimum order** 25 linear(s) meter(s)



Visual not taking into account the printing medium, the final rendering may vary according to the chosen medium.

## Technical characteristics

|                           |                                     |                               |
|---------------------------|-------------------------------------|-------------------------------|
| Flame retardant           | M1 / IMO PASS                       |                               |
| Acoustic                  | Noise reduction coefficient (NRC) : | <b>0.90</b>                   |
| Optical index             | Light reflexion :                   | <b>5 %</b>                    |
|                           | Light absorption :                  | <b>94 %</b>                   |
|                           | Light transmission :                | <b>1 %</b>                    |
| Thermal index             | Solar reflexion :                   | <b>39 %</b>                   |
|                           | Solar absorption :                  | <b>48 %</b>                   |
|                           | Solar transmission :                | <b>13 %</b>                   |
|                           | UV transmission :                   | <b>0 %</b>                    |
|                           | Gtot :                              | <b>Gt 48 % Fc 69 %</b>        |
|                           | Resilience                          | Lightfastness (units Class/8) |
| Pilling                   |                                     | <b>5</b>                      |
| Dimensional Stability (%) |                                     |                               |
| Warp                      |                                     | <b>-2</b>                     |
| Weft                      |                                     | <b>-1</b>                     |
| Martindale (Cycles)       |                                     | <b>40000</b>                  |
| Breaking Elongation       |                                     |                               |
| Warp                      |                                     | <b>38</b>                     |
| Weft                      |                                     | <b>21</b>                     |
| Breaking load (daN)       |                                     |                               |
| Warp                      |                                     | <b>150</b>                    |
| Weft                      |                                     | <b>93</b>                     |



# Print pattern SCOURTIN



SCOURTIN Beige 63



SCOURTIN Fuchsia 33



SCOURTIN Sapin 126



SCOURTIN Bergamote  
121



SCOURTIN Anthracite  
38



SCOURTIN Violette 105



SCOURTIN Pacifique 54



SCOURTIN Rose 129



SCOURTIN Blanc 01



SCOURTIN Naturel 26



SCOURTIN Citrouille  
136



SCOURTIN Turquoise 53



SCOURTIN Brun 23



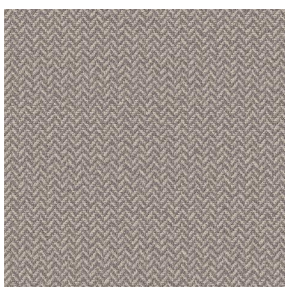
SCOURTIN Hortensia  
134



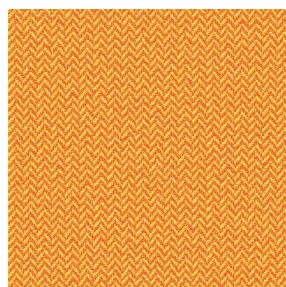
SCOURTIN Orange 123



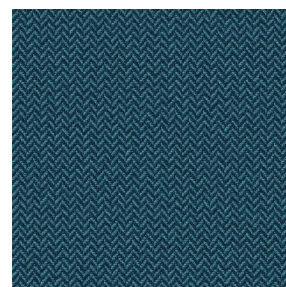
SCOURTIN Rubis 59



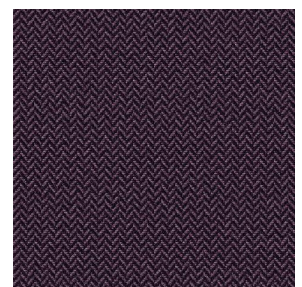
SCOURTIN Ficelle 09



SCOURTIN Maïs 37



SCOURTIN Céladon 135



SCOURTIN Ebene 113

**drapilux**  
By Sotexpro

DRAPILUX GmbH - Hofenstraße 3, 77694 Kehl - Deutschland

Non-contractual photos and colors - Indicative fitting - Fitting may vary depending on support selected



## Print pattern SCOURTIN



SCOURTIN Tourterelle  
138



SCOURTIN Titanium 98



SCOURTIN Lagon 110



SCOURTIN Gris 97