



NATTE bpi 00  
Printing support



SCOURTIN Sapin 126  
Print pattern



Visual not taking into account the printing medium, the final rendering may vary according to the chosen medium.

## Printing support **NATTE bpi 00** Print pattern **SCOURTIN Sapin 126**

This light-filtering fabric serves as a print medium.

### Technical properties



Flame retardant

**Applications** Roman blinds - Panel curtains - Bedspreads - Valences - Bed runners  
- Curtains - Cushions

**Composition** 100% FR polyester

**Weight** 230 g/m<sup>2</sup>

**Width** 280 cm

**Fabric direction** Room High Direction

**Fitting** ↔ 0,0 cm ↓ 0,0 cm

**Maintenance advice**     

**Label** France Terre Textile / OEKO-TEX STANDARD 100

**Minimum order** 25 linear(s) meter(s)

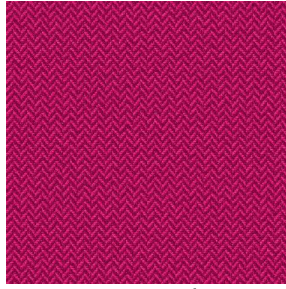
## Technical characteristics

Flame retardant	M1 / IMO PASS	
Acoustic	Noise reduction coefficient (NRC) :	<b>0.90</b>
Optical index	Light reflexion :	<b>5 %</b>
	Light absorption :	<b>94 %</b>
	Light transmission :	<b>1 %</b>
Thermal index	Solar reflexion :	<b>39 %</b>
	Solar absorption :	<b>48 %</b>
	Solar transmission :	<b>13 %</b>
	UV transmission :	<b>0 %</b>
	Gtot :	<b>Gt 48 % Fc 69 %</b>
	Resilience	Lightfastness (units Class/8)
	Pilling	<b>5</b>
	Dimensional Stability (%)	
	Warp	<b>-2</b>
	Weft	<b>-1</b>
	Martindale (Cycles)	<b>40000</b>
	Breaking Elongation	
	Warp	<b>38</b>
	Weft	<b>21</b>
	Breaking load (daN)	
	Warp	<b>150</b>
	Weft	<b>93</b>

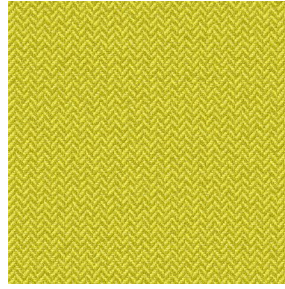
# Print pattern SCOURTIN



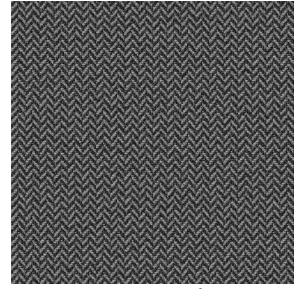
SCOURTIN Beige 63



SCOURTIN Fuchsia 33



SCOURTIN Bergamote  
121



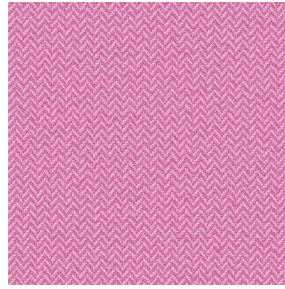
SCOURTIN Anthracite  
38



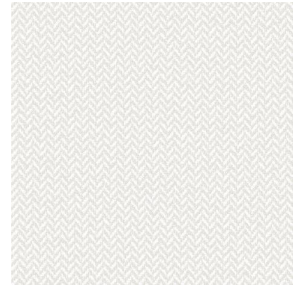
SCOURTIN Violine 105



SCOURTIN Pacifique 54



SCOURTIN Rose 129



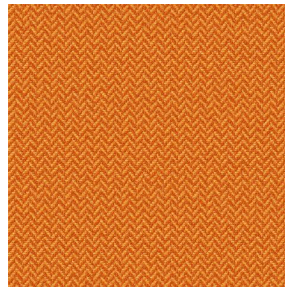
SCOURTIN Blanc 01



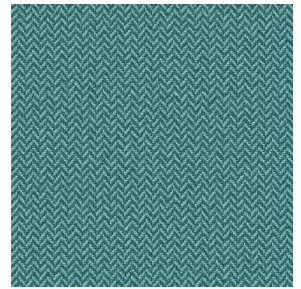
SCOURTIN Lin 11



SCOURTIN Naturel 26



SCOURTIN Citrouille  
136



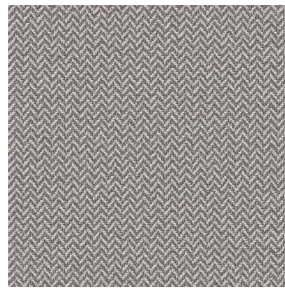
SCOURTIN Turquoise 53



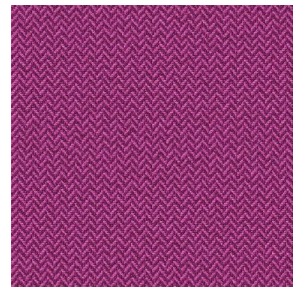
SCOURTIN Brun 23



SCOURTIN Hortensia  
134



SCOURTIN Orage 123



SCOURTIN Rubis 59



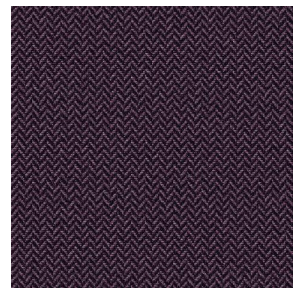
SCOURTIN Ficelle 09



SCOURTIN Maïs 37



SCOURTIN Céladon 135



SCOURTIN Ebene 113

**drapilux**  
By Sotexpro

DRAPILUX GmbH - Hofenstraße 3, 77694 Kehl - Deutschland

Non-contractual photos and colors - Indicative fitting - Fitting may vary depending on support selected

## Print pattern SCOURTIN



SCOURTIN Tourterelle  
138



SCOURTIN Titanium 98



SCOURTIN Lagon 110



SCOURTIN Gris 97