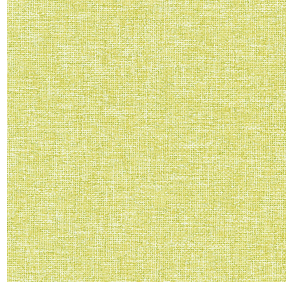




**NATTE bpi 00**  
Printing support



**MUNA Cactus 36**  
Print pattern

## Printing support **NATTE bpi 00** Print pattern **MUNA Cactus 36**

This light-filtering fabric serves as a print medium.

### Technical properties



Flame retardant

**Applications** Roman blinds - Panel curtains - Bedspreads - Valences - Bed runners  
- Curtains - Cushions

**Composition** 100% FR polyester

**Weight** 230 g/m<sup>2</sup>

**Width** 280 cm

**Fabric direction** Room High Direction

**Fitting** ↔ 0,0 cm ↓ 0,0 cm

**Maintenance advice**     

**Label** France Terre Textile / OEKO-TEX STANDARD 100

**Minimum order** 25 linear(s) meter(s)

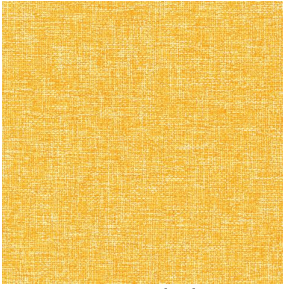


Visual not taking into account the printing medium, the final rendering may vary according to the chosen medium.

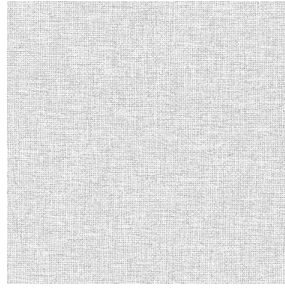
## Technical characteristics

|                 |                                     |                        |
|-----------------|-------------------------------------|------------------------|
| Flame retardant | M1 / IMO PASS                       |                        |
| Acoustic        | Noise reduction coefficient (NRC) : | <b>0.90</b>            |
| Optical index   | Light reflexion :                   | <b>5 %</b>             |
|                 | Light absorption :                  | <b>94 %</b>            |
|                 | Light transmission :                | <b>1 %</b>             |
| Thermal index   | Solar reflexion :                   | <b>39 %</b>            |
|                 | Solar absorption :                  | <b>48 %</b>            |
|                 | Solar transmission :                | <b>13 %</b>            |
|                 | UV transmission :                   | <b>0 %</b>             |
|                 | Gtot :                              | <b>Gt 48 % Fc 69 %</b> |
| Resilience      | Lightfastness (units Class/8)       | <b>5</b>               |
|                 | Pilling                             | <b>5</b>               |
|                 | Dimensional Stability (%)           |                        |
|                 | Warp                                | <b>-2</b>              |
|                 | Weft                                | <b>-1</b>              |
|                 | Martindale (Cycles)                 | <b>40000</b>           |
|                 | Breaking Elongation                 |                        |
|                 | Warp                                | <b>38</b>              |
|                 | Weft                                | <b>21</b>              |
|                 | Breaking load (daN)                 |                        |
| Warp            | <b>150</b>                          |                        |
| Weft            | <b>93</b>                           |                        |

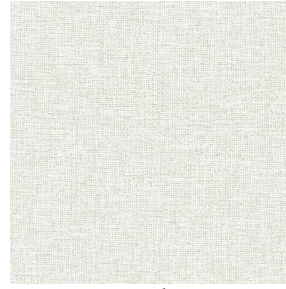
# Print pattern MUNA



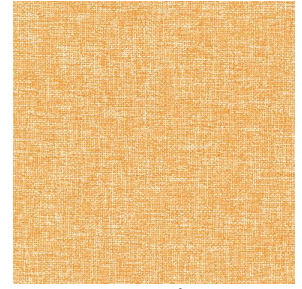
MUNA soleil 90



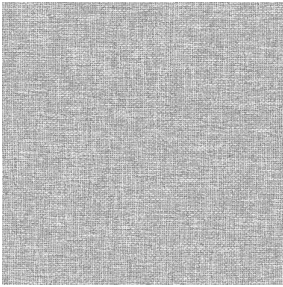
MUNA gris 97



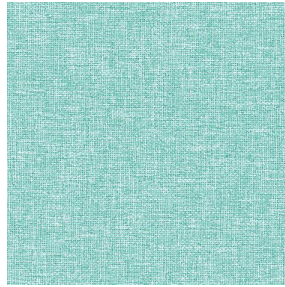
MUNA lin 11



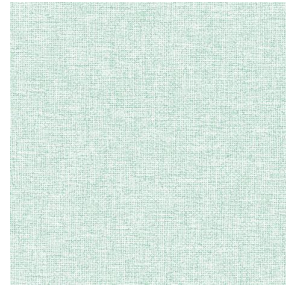
MUNA Melon 22



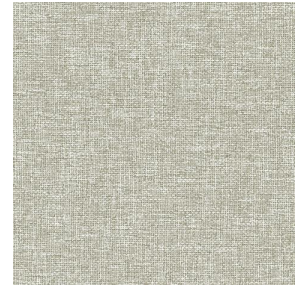
MUNA souris 31



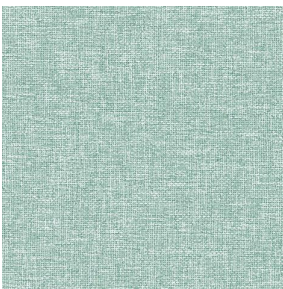
MUNA lagon 110



MUNA jade 116



MUNA terre 107



MUNA céladon 135



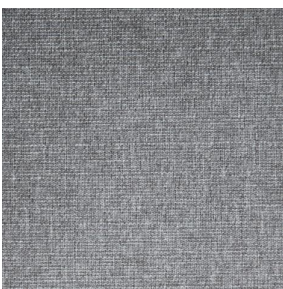
MUNA Coco 142



MUNA Sable 67



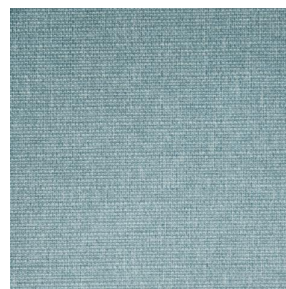
MUNA Saumon 143



MUNA Sisal 140



MUNA Tourterelle 138



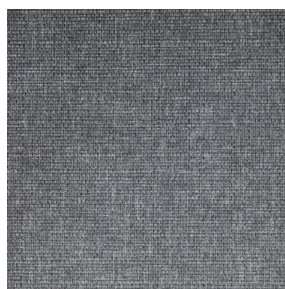
MUNA Ardoise 87



MUNA Tilleul 103



MUNA Chanvre 72



MUNA Graphite 77



MUNA Olive 61



MUNA Lierre 124

**drapilux**  
By Sotexpro

DRAPILUX GmbH - Hafenstraße 3, 77694 Kehl - Deutschland

Non-contractual photos and colors - Indicative fitting - Fitting may vary depending on support selected



# Print pattern MUNA



MUNA Indigo 144



MUNA Sienne 29



MUNA Rouge 21



MUNA Saphir 106



MUNA Violine 105



MUNA Titanium 98



MUNA Acier 18