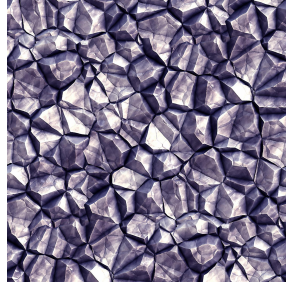




NATTE bpi 00
Printing support



SAPHIR Violine 105
Print pattern



Visual not taking into account the printing medium, the final rendering may vary according to the chosen medium.

Printing support **NATTE bpi 00** Print pattern **SAPHIR Violine 105**

This light-filtering fabric serves as a print medium.

Technical properties



Flame retardant

Applications Roman blinds - Panel curtains - Bedspreads - Valences - Bed runners
- Curtains - Cushions

Composition 100% FR polyester

Weight 230 g/m²

Width 280 cm

Fabric direction Room High Direction

Fitting ↔ 0,0 cm ↓ 0,0 cm

Maintenance advice     

Label France Terre Textile / OEKO-TEX STANDARD 100

Minimum order 25 linear(s) meter(s)

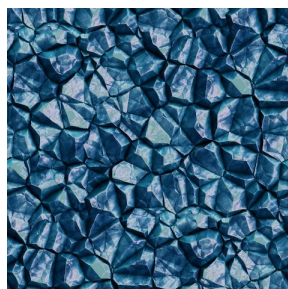
Technical characteristics

Flame retardant	M1 / IMO PASS	
Acoustic	Noise reduction coefficient (NRC) :	0.90
Optical index	Light reflexion :	5 %
	Light absorption :	94 %
	Light transmission :	1 %
Thermal index	Solar reflexion :	39 %
	Solar absorption :	48 %
	Solar transmission :	13 %
	UV transmission :	0 %
	Gtot :	Gt 48 % Fc 69 %
	Resilience	Lightfastness (units Class/8)
Pilling		5
Dimensional Stability (%)		
Warp		-2
Weft		-1
Martindale (Cycles)		40000
Breaking Elongation		
Warp		38
Weft		21
Breaking load (daN)		
Warp		150
Weft	93	

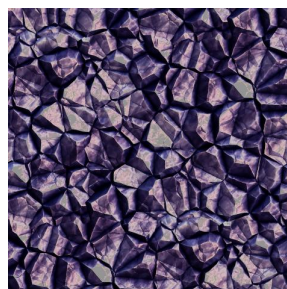
Print pattern SAPHIR



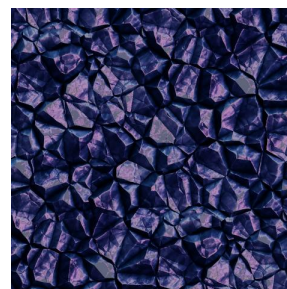
SAPHIR Naturel 26



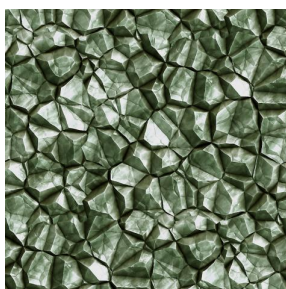
SAPHIR Gentiane 16



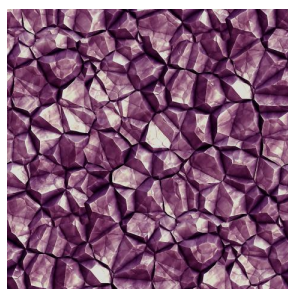
SAPHIR Aubergine 27



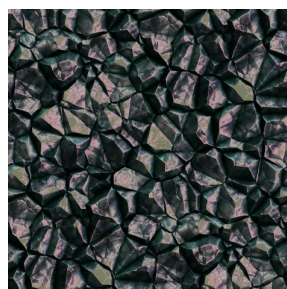
SAPHIR Opéra 104



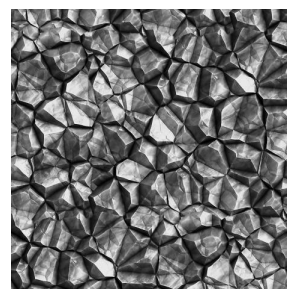
SAPHIR Absinthe 132



SAPHIR Hortensia 134



SAPHIR Reflet 140



SAPHIR Acier 18

drapilux
By Sotexpro

DRAPILUX GmbH - Hofenstraße 3, 77694 Kehl - Deutschland

Non-contractual photos and colors - Indicative fitting - Fitting may vary depending on support selected