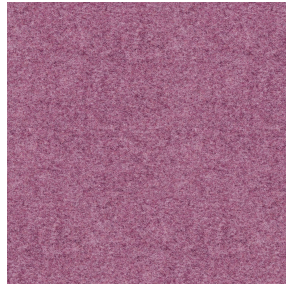




**NATTE bpi 00**  
Printing support



**ELAINA Hortensia 134**  
Print pattern



## Printing support **NATTE bpi 00** Print pattern **ELAINA Hortensia 134**

This light-filtering fabric serves as a print medium.

### Technical properties



Flame retardant

**Applications** Roman blinds - Panel curtains - Bedspreads - Valences - Bed runners  
- Curtains - Cushions

**Composition** 100% FR polyester

**Weight** 230 g/m<sup>2</sup>

**Width** 140 cm

**Fabric direction** Standard Direction

**Fitting** ↔ 0,0 cm ↓ 0,0 cm

**Maintenance advice**     

**Label** France Terre Textile / OEKO-TEX STANDARD 100

**Minimum order** 25 linear(s) metter(s)



Visual not taking into account the printing medium, the final rendering may vary according to the chosen medium.

## Technical characteristics

|                 |                                     |                               |
|-----------------|-------------------------------------|-------------------------------|
| Flame retardant | M1 / IMO PASS                       |                               |
| Acoustic        | Noise reduction coefficient (NRC) : | <b>0.90</b>                   |
| Optical index   | Light reflexion :                   | <b>5 %</b>                    |
|                 | Light absorption :                  | <b>94 %</b>                   |
|                 | Light transmission :                | <b>1 %</b>                    |
| Thermal index   | Solar reflexion :                   | <b>39 %</b>                   |
|                 | Solar absorption :                  | <b>48 %</b>                   |
|                 | Solar transmission :                | <b>13 %</b>                   |
|                 | UV transmission :                   | <b>0 %</b>                    |
|                 | Gtot :                              | <b>Gt 48 % Fc 69 %</b>        |
|                 | Resilience                          | Lightfastness (units Class/8) |
|                 | Pilling                             | <b>5</b>                      |
|                 | Dimentional Stability (%)           |                               |
|                 | Warp                                | <b>-2</b>                     |
|                 | Weft                                | <b>-1</b>                     |
|                 | Martindale (Cycles)                 | <b>40000</b>                  |
|                 | Breaking Elongation                 |                               |
|                 | Warp                                | <b>38</b>                     |
|                 | Weft                                | <b>21</b>                     |
|                 | Breaking load (daN)                 |                               |
|                 | Warp                                | <b>150</b>                    |
|                 | Weft                                | <b>93</b>                     |

# Print pattern ELAINA



ELAINA Gris 91



ELAINA Violine 105



ELAINA Ocre 03



ELAINA Lin 11



ELAINA Bergamote 121



ELAINA Rose 129



ELAINA Pacifique 54



ELAINA Beige 63



ELAINA Céladon 135



ELAINA Saphir 106



ELAINA Anis 62



ELAINA Rouge 21



ELAINA Prairie 125



ELAINA Graphite 77



ELAINA Lierre 124



ELAINA Naturel 26



ELAINA Genêt 06



ELAINA Ivoire 115



ELAINA Gentiane 16



ELAINA Navy 120

**drapilux**  
By Sotexpro

DRAPILUX GmbH - Hofenstraße 3, 77694 Kehl - Deutschland

Non-contractual photos and colors - Indicative fitting - Fitting may vary depending on support selected



## Print pattern ELAINA



ELAINA Chamois 111



ELAINA Turquoise 53



ELAINA Anthracite 38



ELAINA Fiesta 131

**drapilux**  
By Sotexpro

DRAPILUX GmbH - Hafenstraße 3, 77694 Kehl - Deutschland

Non-contractual photos and colors - Indicative fitting - Fitting may vary depending on support selected