



NATTE bpi 00  
Printing support



METIS Chaudron 118  
Print pattern



Visual not taking into account the printing medium, the final rendering may vary according to the chosen medium.

## Printing support **NATTE bpi 00** Print pattern **METIS Chaudron 118**

This light-filtering fabric serves as a print medium.

### Technical properties



Flame retardant

**Applications** Roman blinds - Panel curtains - Bedspreads - Valences - Bed runners  
- Curtains - Cushions

**Composition** 100% FR polyester

**Weight** 230 g/m<sup>2</sup>

**Width** 140 cm

**Fabric direction** Standard Direction

**Fitting** ↔ 0,0 cm ↓ 0,0 cm

**Maintenance advice**     

**Label** France Terre Textile / OEKO-TEX STANDARD 100

**Minimum order** 25 linear(s) metter(s)

## Technical characteristics

|                 |                                     |                        |
|-----------------|-------------------------------------|------------------------|
| Flame retardant | M1 / IMO PASS                       |                        |
| Acoustic        | Noise reduction coefficient (NRC) : | <b>0.90</b>            |
| Optical index   | Light reflexion :                   | <b>5 %</b>             |
|                 | Light absorption :                  | <b>94 %</b>            |
|                 | Light transmission :                | <b>1 %</b>             |
| Thermal index   | Solar reflexion :                   | <b>39 %</b>            |
|                 | Solar absorption :                  | <b>48 %</b>            |
|                 | Solar transmission :                | <b>13 %</b>            |
|                 | UV transmission :                   | <b>0 %</b>             |
|                 | Gtot :                              | <b>Gt 48 % Fc 69 %</b> |
| Resilience      | Lightfastness (units Class/8)       | <b>5</b>               |
|                 | Pilling                             | <b>5</b>               |
|                 | Dimensional Stability (%)           |                        |
|                 | Warp                                | <b>-2</b>              |
|                 | Weft                                | <b>-1</b>              |
|                 | Martindale (Cycles)                 | <b>40000</b>           |
|                 | Breaking Elongation                 |                        |
|                 | Warp                                | <b>38</b>              |
|                 | Weft                                | <b>21</b>              |
|                 | Breaking load (daN)                 |                        |
| Warp            | <b>150</b>                          |                        |
| Weft            | <b>93</b>                           |                        |

# Print pattern METIS



METIS Gentiane 16



METIS Absinthe 132



METIS Noir 10



METIS Citrouille 136



METIS Chanvre 72



METIS Gris 97



METIS Bergamote 121



METIS Violine 105



METIS Perle 96



METIS Céladon 135



METIS Lin 11



METIS Sienne 29



METIS Lagon 110



METIS Cobalt 114



METIS Framboise 81



METIS Abricot 08



METIS Chamois 111



METIS Ivoire 115



METIS Ficelle 09



METIS Rose 129

**drapilux**  
By Sotexpro

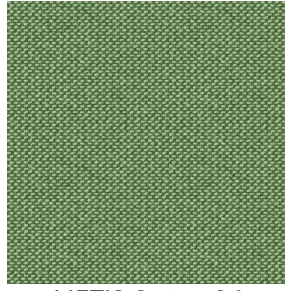
DRAPILUX GmbH - Hofenstraße 3, 77694 Kehl - Deutschland

Non-contractual photos and colors - Indicative fitting - Fitting may vary depending on support selected

## Print pattern METIS



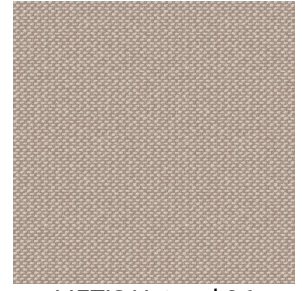
METIS Parme 79



METIS Cactus 36



METIS Hortensia 134



METIS Naturel 26