



NATTE bpi 00
Printing support



SABLE Lin 11
Print pattern



Visual not taking into account the printing medium, the final rendering may vary according to the chosen medium.

Printing support **NATTE bpi 00** Print pattern **SABLE Lin 11**

This light-filtering fabric serves as a print medium.

Technical properties



Flame retardant

Applications Roman blinds - Panel curtains - Bedspreads - Valences - Bed runners
- Curtains - Cushions

Composition 100% FR polyester

Weight 230 g/m²

Width 140 cm

Fabric direction Standard Direction

Fitting ↔ 0,0 cm ↓ 0,0 cm

Maintenance advice     

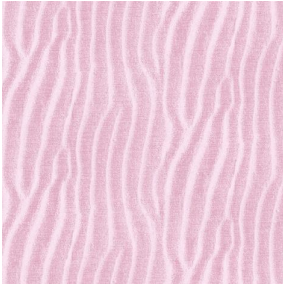
Label France Terre Textile / OEKO-TEX STANDARD 100

Minimum order 25 linear(s) meter(s)

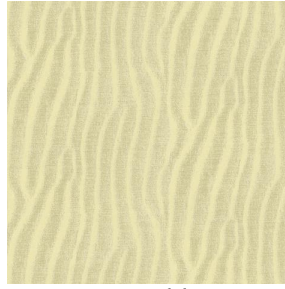
Technical characteristics

| | | |
|-----------------|-------------------------------------|-------------------------------|
| Flame retardant | M1 / IMO PASS | |
| Acoustic | Noise reduction coefficient (NRC) : | 0.90 |
| Optical index | Light reflexion : | 5 % |
| | Light absorption : | 94 % |
| | Light transmission : | 1 % |
| Thermal index | Solar reflexion : | 39 % |
| | Solar absorption : | 48 % |
| | Solar transmission : | 13 % |
| | UV transmission : | 0 % |
| | Gtot : | Gt 48 % Fc 69 % |
| | Resilience | Lightfastness (units Class/8) |
| | Pilling | 5 |
| | Dimensional Stability (%) | |
| | Warp | -2 |
| | Weft | -1 |
| | Martindale (Cycles) | 40000 |
| | Breaking Elongation | |
| | Warp | 38 |
| | Weft | 21 |
| | Breaking load (daN) | |
| | Warp | 150 |
| | Weft | 93 |

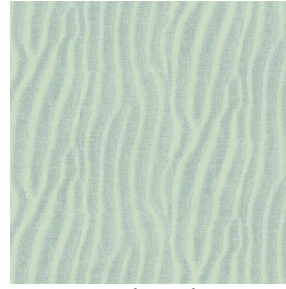
Print pattern SABLE



SABLE Rose 129



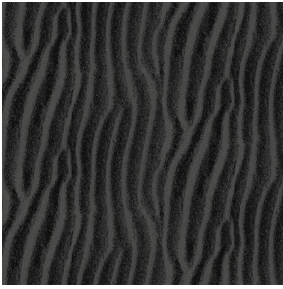
SABLE Sable 67



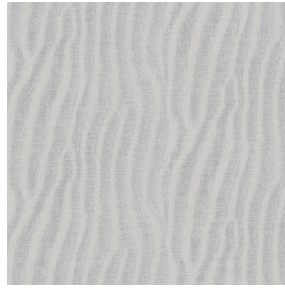
SABLE Absinthe 132



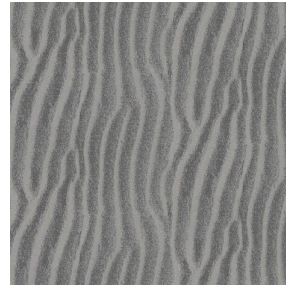
SABLE Ivoire 115



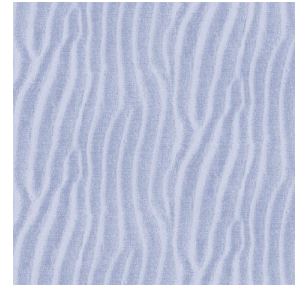
SABLE Noir 10



SABLE Souris 31



SABLE Gris 97



SABLE Jasmin 74

drapilux
By Sotexpro

DRAPILUX GmbH - Hafenstraße 3, 77694 Kehl - Deutschland

Non-contractual photos and colors - Indicative fitting - Fitting may vary depending on support selected