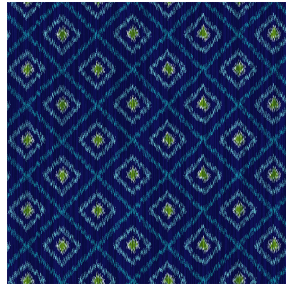




LY BPI 00
Printing support



HAMPI Bleu 41
Print pattern



Printing support **LY BPI 00** Print pattern **HAMPI Bleu 41**

Fine linen look sheer. The weaving of the LY is slightly textured which allows it to be easily printed by sublimation

Technical properties



Flame retardant



Transparent

Applications Roman blinds - Panel curtains - Curtains

Composition 100% polyester/polyester FR

Weight 90 g/m²

Width 290 cm

Fabric direction Room High Direction

Fitting ↔ 28.0 cm ↓ 28.0 cm

Maintenance advice     

Label France Terre Textile / OEKO-TEX STANDARD 100

Minimum order 25 linear(s) meter(s)



Visual not taking into account the printing medium, the final rendering may vary according to the chosen medium.

Technical characteristics

| | | |
|------------------|-------------------------------|----|
| Flame retardant | M1 / B1 / IMO PASS | |
| Transparent veil | Yes | |
| Resilience | Lightfastness (units Class/8) | 6 |
| | Dimensional Stability (%) | |
| | Warp | 0 |
| | Weft | 0 |
| | Breaking Elongation | |
| | Warp | 69 |
| | Weft | 58 |
| | Breaking load (daN) | |
| | Warp | 47 |
| | Weft | 24 |