



LY BPI 00  
Printing support



SAPHIR Gentiane 16  
Print pattern



## Printing support **LY BPI 00** Print pattern **SAPHIR Gentiane 16**

Fine linen look sheer. The weaving of the LY is slightly textured which allows it to be easily printed by sublimation

### Technical properties



Flame retardant    Transparent

**Applications** Roman blinds - Panel curtains - Curtains

**Composition** 100% polyester/polyester FR

**Weight** 90 g/m<sup>2</sup>

**Width** 290 cm

**Fabric direction** Room High Direction

**Fitting** ↔ 0.0 cm ↓ 0.0 cm

**Maintenance advice**     

**Label** France Terre Textile / OEKO-TEX STANDARD 100

**Minimum order** 25 linear(s) meter(s)



Visual not taking into account the printing medium, the final rendering may vary according to the chosen medium.

## Technical characteristics

Flame retardant	M1 / B1 / IMO PASS	
Transparent veil	Yes	
Resilience	Lightfastness (units Class/8)	<b>6</b>
	Dimensional Stability (%)	
	Warp	<b>0</b>
	Weft	<b>0</b>
	Breaking Elongation	
	Warp	<b>69</b>
	Weft	<b>58</b>
	Breaking load (daN)	
	Warp	<b>47</b>
	Weft	<b>24</b>

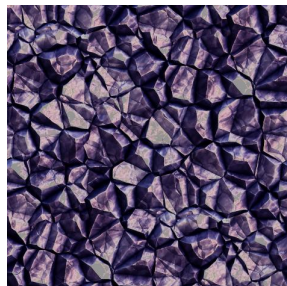
# Print pattern SAPHIR



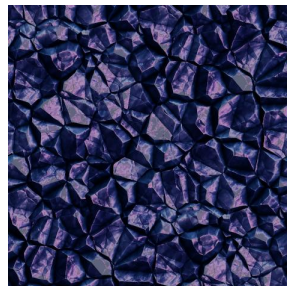
SAPHIR Naturel 26



SAPHIR Violine 105



SAPHIR Aubergine 27



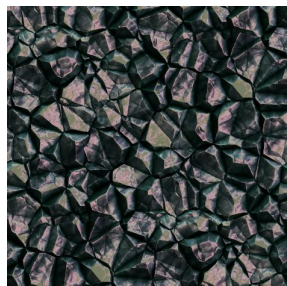
SAPHIR Opéra 104



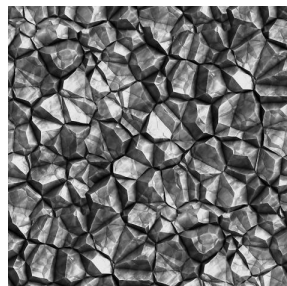
SAPHIR Absinthe 132



SAPHIR Hortensia 134



SAPHIR Reflet 140



SAPHIR Acier 18

**drapilux**  
By Sotexpro

DRAPILUX GmbH - Hafenstraße 3, 77694 Kehl - Deutschland

*Non-contractual photos and colors - Indicative fitting - Fitting may vary depending on support selected*