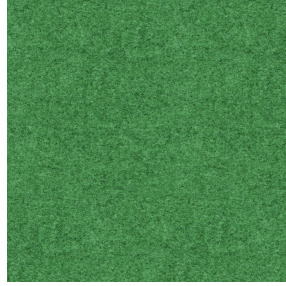




LY BPI 00
Printing support



ELAINA Prairie 125
Print pattern



Printing support **LY BPI 00** Print pattern **ELAINA Prairie 125**

Fine linen look sheer. The weaving of the LY is slightly textured which allows it to be easily printed by sublimation

Technical properties



Flame retardant Transparent

Applications Roman blinds - Panel curtains - Curtains

Composition 100% polyester/polyester FR

Weight 90 g/m²

Width 290 cm

Fabric direction Room High Direction

Fitting ↔ 0.0 cm ↓ 0.0 cm

Maintenance advice     

Label France Terre Textile / OEKO-TEX STANDARD 100

Minimum order 25 linear(s) meter(s)



Visual not taking into account the printing medium, the final rendering may vary according to the chosen medium.

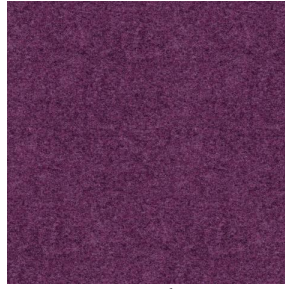
Technical characteristics

Flame retardant	M1 / B1 / IMO PASS	
Transparent veil	Yes	
Resilience	Lightfastness (units Class/8)	6
	Dimensional Stability (%)	
	Warp	0
	Weft	0
	Breaking Elongation	
	Warp	69
	Weft	58
	Breaking load (daN)	
	Warp	47
	Weft	24

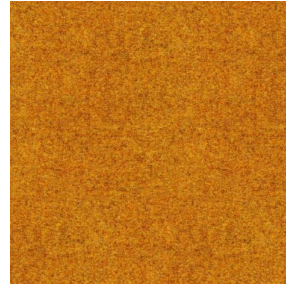
Print pattern ELAINA



ELAINA Gris 91



ELAINA Violine 105



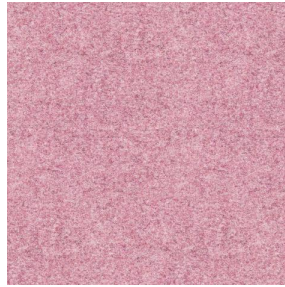
ELAINA Ocre 03



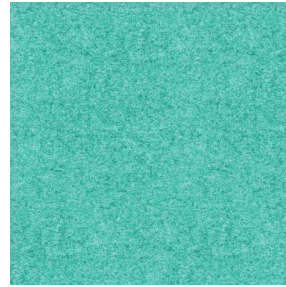
ELAINA Lin 11



ELAINA Bergamote 121



ELAINA Rose 129



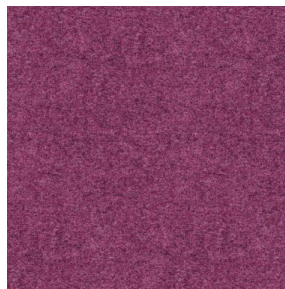
ELAINA Pacifique 54



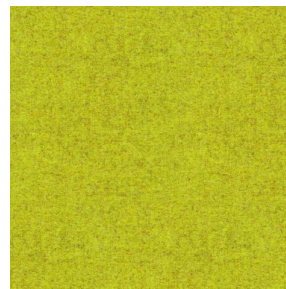
ELAINA Beige 63



ELAINA Céladon 135



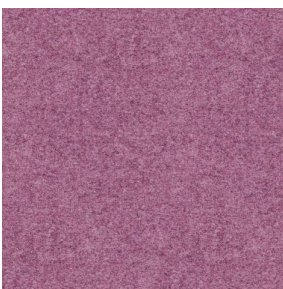
ELAINA Saphir 106



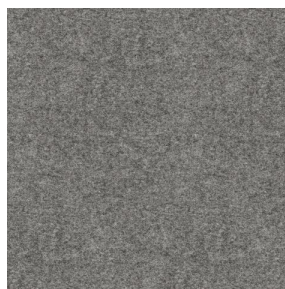
ELAINA Anis 62



ELAINA Rouge 21



ELAINA Hortensia 134



ELAINA Graphite 77



ELAINA Lierre 124



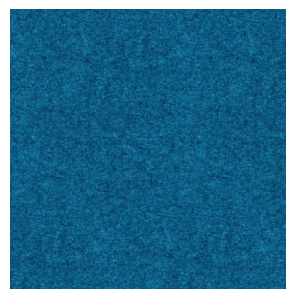
ELAINA Naturel 26



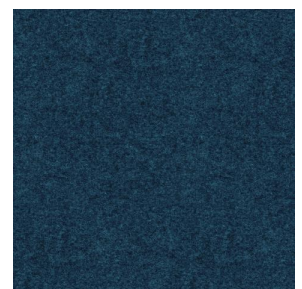
ELAINA Genêt 06



ELAINA Ivoire 115



ELAINA Gentiane 16



ELAINA Navy 120

drapilux
By Sotexpro

DRAPILUX GmbH - Hofenstraße 3, 77694 Kehl - Deutschland

Non-contractual photos and colors - Indicative fitting - Fitting may vary depending on support selected

Print pattern ELAINA



ELAINA Chamois 111



ELAINA Turquoise 53



ELAINA Anthracite 38



ELAINA Fiesta 131

drapilux
By Sotexpro

DRAPILUX GmbH - Hafenstraße 3, 77694 Kehl - Deutschland

Non-contractual photos and colors - Indicative fitting - Fitting may vary depending on support selected