



LY BPI 00  
Printing support



ANATOLE Naturel 26  
Print pattern



## Printing support LY BPI 00 Print pattern ANATOLE Naturel 26

Fine linen look sheer. The weaving of the LY is slightly textured which allows it to be easily printed by sublimation

### Technical properties



Flame retardant    Transparent

**Applications** Roman blinds - Panel curtains - Curtains

**Composition** 100% polyester/polyester FR

**Weight** 90 g/m<sup>2</sup>

**Width** 290 cm

**Fabric direction** Room High Direction

**Fitting** ↔ cm ↓ cm

**Maintenance advice**     

**Label** France Terre Textile / OEKO-TEX STANDARD 100

**Minimum order** 25 linear(s) meter(s)

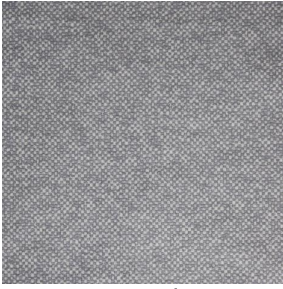


Visual not taking into account the printing medium, the final rendering may vary according to the chosen medium.

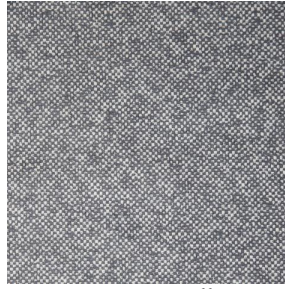
## Technical characteristics

Flame retardant	M1 / B1 / IMO PASS	
Transparent veil	Yes	
Resilience	Lightfastness (units Class/8)	6
	Dimensional Stability (%)	
	Warp	0
	Weft	0
	Breaking Elongation	
	Warp	69
	Weft	58
	Breaking load (daN)	
	Warp	47
	Weft	24

# Print pattern ANATOLE



ANATOLE lin 11



ANATOLE Ficelle 09



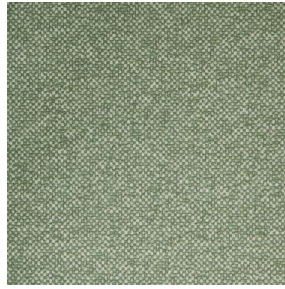
ANATOLE Celadon 135



ANATOLE Océan 91



ANATOLE Titanium 98



ANATOLE Cactus 36



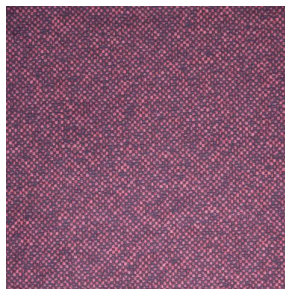
ANATOLE mousse 92



ANATOLE Or 94



ANATOLE Chaudron  
118



ANATOLE Amarante  
108



ANATOLE Taupe 95