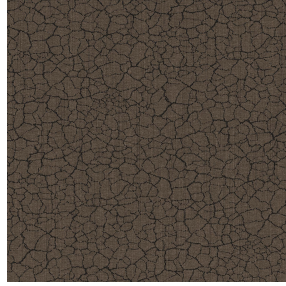


LY BPI 00
Printing support



TERRA Brun 23
Print pattern



Printing support **LY BPI 00** Print pattern **TERRA Brun 23**

Fine linen look sheer. The weaving of the LY is slightly textured which allows it to be easily printed by sublimation

Technical properties



Flame retardant Transparent

Applications Roman blinds - Panel curtains - Curtains

Composition 100% polyester/polyester FR

Weight 90 g/m²

Width 290 cm

Fabric direction Room High Direction

Fitting ↔ 0.0 cm ↓ 0.0 cm

Maintenance advice     

Label France Terre Textile / OEKO-TEX STANDARD 100

Minimum order 25 linear(s) meter(s)



Visual not taking into account the printing medium, the final rendering may vary according to the chosen medium.

Technical characteristics

Flame retardant	M1 / B1 / IMO PASS	
Transparent veil	Yes	
Resilience	Lightfastness (units Class/8)	6
	Dimensional Stability (%)	
	Warp	0
	Weft	0
	Breaking Elongation	
	Warp	69
	Weft	58
	Breaking load (daN)	
	Warp	47
	Weft	24

Print pattern TERRA



TERRA Ficelle 09



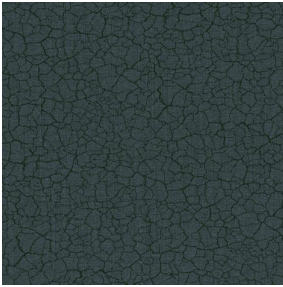
TERRA Taupe 95



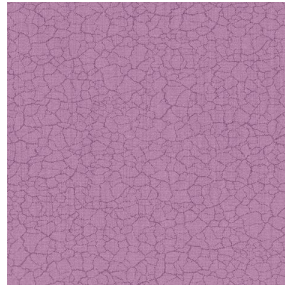
TERRA Ecume 82



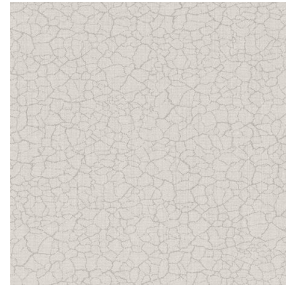
TERRA Rose 129



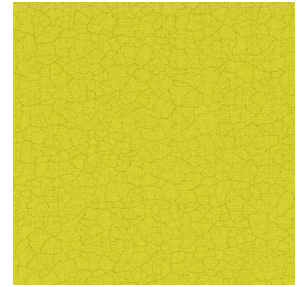
TERRA Fusain 71



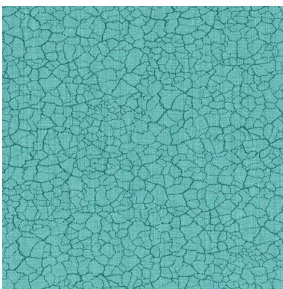
TERRA Hortensia 134



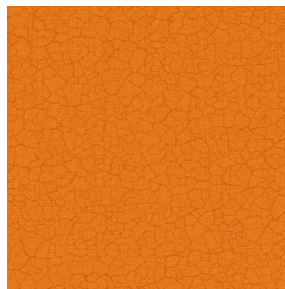
TERRA Naturel 26



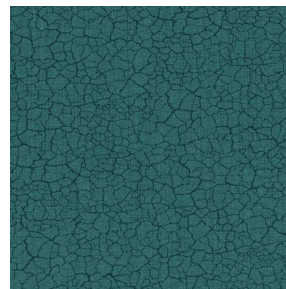
TERRA Anis 62



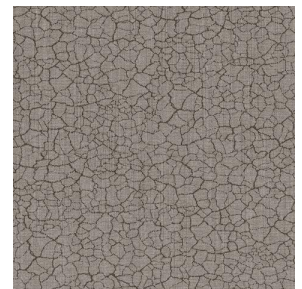
TERRA Lagon 110



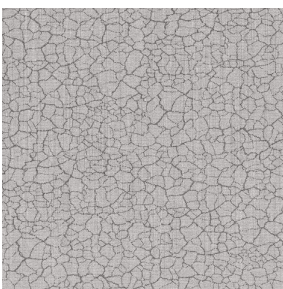
TERRA Citrouille 136



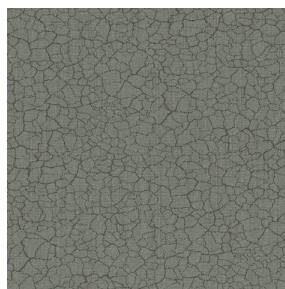
TERRA Pacifique 54



TERRA Chamois 111



TERRA Titanium 98



TERRA Graphite 77



TERRA Gris 97



TERRA Ardoise 87



TERRA Violine 105



TERRA Chanvre 72



TERRA Argile 85



TERRA Lin 11

drapilux
By Sotexpro

DRAPILUX GmbH - Hofenstraße 3, 77694 Kehl - Deutschland

Non-contractual photos and colors - Indicative fitting - Fitting may vary depending on support selected

Print pattern TERRA



TERRA Genêt 06



TERRA Céladon 135



TERRA Ebene 113



TERRA Ocre 03