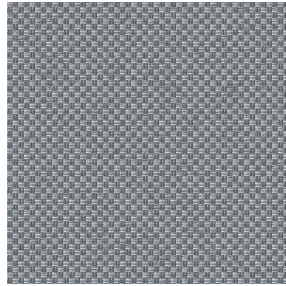




**LY Blanc 01**  
Printing support



**CHARLOTTE Gris 97**  
Print pattern



## Printing support **LY Blanc 01** Print pattern **CHARLOTTE Gris 97**

Fine linen look sheer. The weaving of the LY is slightly textured which allows it to be easily printed by sublimation

### Technical properties



Flame retardant Transparent

**Applications** Roman blinds - Panel curtains - Curtains

**Composition** 100% polyester/polyester FR

**Weight** 90 g/m<sup>2</sup>

**Width** 290 cm

**Fabric direction** Room High Direction

**Fitting** ↔ 0.0 cm ↓ 0.0 cm

**Maintenance advice**     

**Label** France Terre Textile / OEKO-TEX STANDARD 100

**Minimum order** 25 linear(s) meter(s)



Visual not taking into account the printing medium, the final rendering may vary according to the chosen medium.

## Technical characteristics

|                  |                               |                 |
|------------------|-------------------------------|-----------------|
| Flame retardant  | M1 / B1 / IMO PASS            |                 |
| Optical index    | Light reflexion :             | 33 %            |
|                  | Light absorption :            | 2 %             |
|                  | Light transmission :          | 65 %            |
| Transparent veil | Yes                           |                 |
| Thermal index    | Solar reflexion :             | 32 %            |
|                  | Solar absorption :            | 4 %             |
|                  | Solar transmission :          | 64 %            |
|                  | UV transmission :             | 50 %            |
|                  | Gtot :                        | Gt 48 % Fc 81 % |
| Resilience       | Lightfastness (units Class/8) | 6               |
|                  | Dimensional Stability (%)     |                 |
|                  | Warp                          | 0               |
|                  | Weft                          | 0               |
|                  | Breaking Elongation           |                 |
|                  | Warp                          | 69              |
|                  | Weft                          | 58              |
|                  | Breaking load (daN)           |                 |
|                  | Warp                          | 47              |
| Weft             | 24                            |                 |

# Print pattern CHARLOTTE



CHARLOTTE Absinthe  
132



CHARLOTTE Anis 62



CHARLOTTE Beige 63



CHARLOTTE Bouteille  
101



CHARLOTTE Brume 47



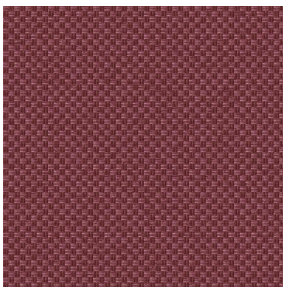
CHARLOTTE Cerise 66



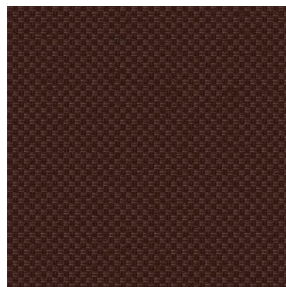
CHARLOTTE Chamois  
111



CHARLOTTE Chataigne  
55



CHARLOTTE Chaudron  
118



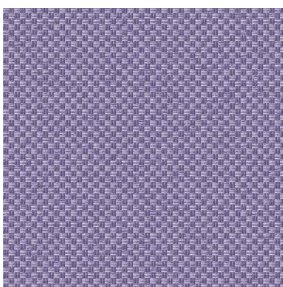
CHARLOTTE Chocolat  
70



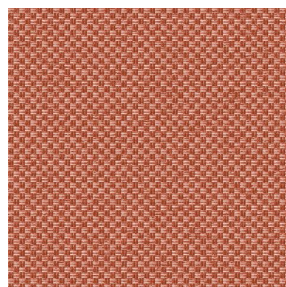
CHARLOTTE Citrouille  
136



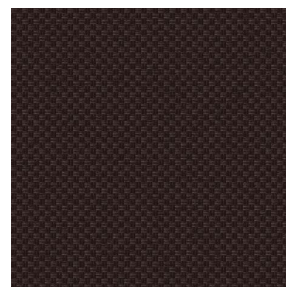
CHARLOTTE Cobalt 114



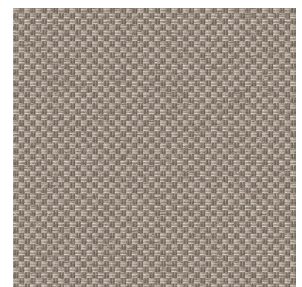
CHARLOTTE Crepuscule  
45



CHARLOTTE Cuivre 50



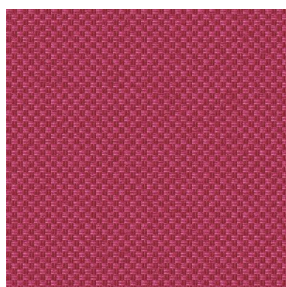
CHARLOTTE Ebene 124



CHARLOTTE Ficelle 09



CHARLOTTE Fiesta 131



CHARLOTTE Grenat 56



CHARLOTTE Hortensia  
134



CHARLOTTE Lagon 110

**drapilux**  
By Sotexpro

DRAPILUX GmbH - Hofenstraße 3, 77694 Kehl - Deutschland

Non-contractual photos and colors - Indicative fitting - Fitting may vary depending on support selected

# Print pattern CHARLOTTE



CHARLOTTE Lilas 19



CHARLOTTE Lin 11



CHARLOTTE Maïs 37



CHARLOTTE Melon 22



CHARLOTTE Menthe  
122



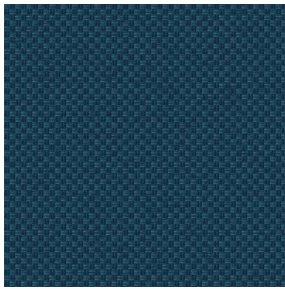
CHARLOTTE Mordore  
133



CHARLOTTE Mousse 92



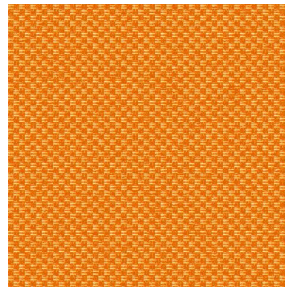
CHARLOTTE Noir 10



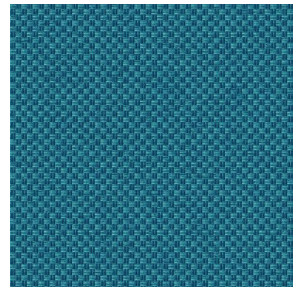
CHARLOTTE Océan 91



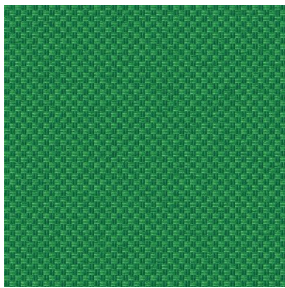
CHARLOTTE Opéra 104



CHARLOTTE Orange 15



CHARLOTTE Pacifique  
54



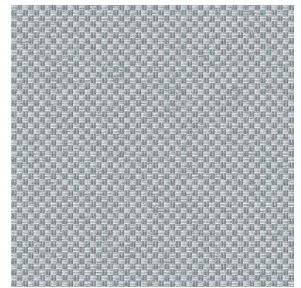
CHARLOTTE Prairie 125



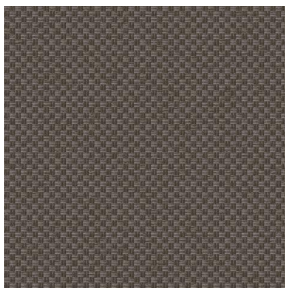
CHARLOTTE Printemps  
130



CHARLOTTE Sienne 29



CHARLOTTE Souris 31



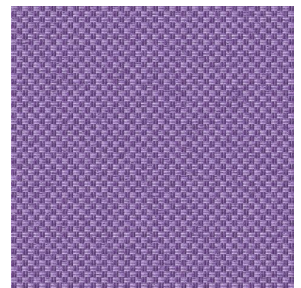
CHARLOTTE Terre 107



CHARLOTTE Tilleul 103



CHARLOTTE Vieux rose  
64



CHARLOTTE Violine 105

**drapilux**  
By Sotexpro

DRAPILUX GmbH - Hafenstraße 3, 77694 Kehl - Deutschland

Non-contractual photos and colors - Indicative fitting - Fitting may vary depending on support selected