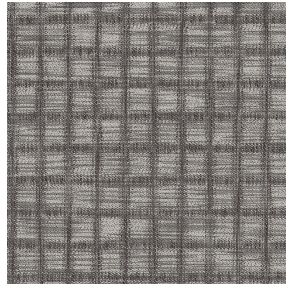




LY Blanc 01  
Printing support



ECUME Taupe 95  
Print pattern



## Printing support **LY Blanc 01** Print pattern **ECUME Taupe 95**

Fine linen look sheer. The weaving of the LY is slightly textured which allows it to be easily printed by sublimation

### Technical properties



Flame retardant    Transparent

**Applications** Roman blinds - Panel curtains - Curtains

**Composition** 100% polyester/polyester FR

**Weight** 90 g/m<sup>2</sup>

**Width** 290 cm

**Fabric direction** Room High Direction

**Fitting** ↔ 20.0 cm ↓ 22.0 cm

**Maintenance advice**     

**Label** France Terre Textile / OEKO-TEX STANDARD 100

**Minimum order** 25 linear(s) meter(s)



Visual not taking into account the printing medium, the final rendering may vary according to the chosen medium.

## Technical characteristics

|                  |                               |                 |
|------------------|-------------------------------|-----------------|
| Flame retardant  | M1 / B1 / IMO PASS            |                 |
| Optical index    | Light reflexion :             | 33 %            |
|                  | Light absorption :            | 2 %             |
|                  | Light transmission :          | 65 %            |
| Transparent veil | Yes                           |                 |
| Thermal index    | Solar reflexion :             | 32 %            |
|                  | Solar absorption :            | 4 %             |
|                  | Solar transmission :          | 64 %            |
|                  | UV transmission :             | 50 %            |
|                  | Gtot :                        | Gt 48 % Fc 81 % |
| Resilience       | Lightfastness (units Class/8) | 6               |
|                  | Dimensional Stability (%)     |                 |
|                  | Warp                          | 0               |
|                  | Weft                          | 0               |
|                  | Breaking Elongation           |                 |
|                  | Warp                          | 69              |
|                  | Weft                          | 58              |
|                  | Breaking load (daN)           |                 |
|                  | Warp                          | 47              |
| Weft             | 24                            |                 |

# Print pattern ECUME



ECUME Turquoise 53

**drapilux**  
By Sotexpro

DRAPILUX GmbH - Hafenstraße 3, 77694 Kehl - Deutschland

Non-contractual photos and colors - Indicative fitting - Fitting may vary depending on support selected