



ETAMINE BPI 00
Printing support



SAPHIR Hortensia 134
Print pattern



Printing support **ETAMINE BPI 00** Print pattern **SAPHIR Hortensia 134**

High-quality, light and airy sheer curtains.

Technical properties



Flame retardant Transparent

Applications Roman blinds - Panel curtains - Curtains

Composition 100% FR polyester

Weight 95 g/m²

Width 290 cm

Fabric direction Room High Direction

Fitting ↔ 0.0 cm ↓ 0.0 cm

Maintenance advice     

Label France Terre Textile / OEKO-TEX STANDARD 100

Minimum order 25 linear(s) meter(s)



Visual not taking into account the printing medium, the final rendering may vary according to the chosen medium.

Technical characteristics

Flame retardant	M1 / B1 / IMO PASS / UNI 8456 / 9174 Classe Uno												
Transparent veil	Yes												
Resilience	<p>Dimensional Stability (%)</p> <table> <tr> <td>Warp</td> <td>0</td> </tr> <tr> <td>Weft</td> <td>0</td> </tr> </table> <p>Breaking Elongation</p> <table> <tr> <td>Warp</td> <td>46</td> </tr> <tr> <td>Weft</td> <td>13</td> </tr> </table> <p>Breaking load (daN)</p> <table> <tr> <td>Warp</td> <td>41</td> </tr> <tr> <td>Weft</td> <td>40</td> </tr> </table>	Warp	0	Weft	0	Warp	46	Weft	13	Warp	41	Weft	40
Warp	0												
Weft	0												
Warp	46												
Weft	13												
Warp	41												
Weft	40												

Print pattern SAPHIR



SAPHIR Naturel 26



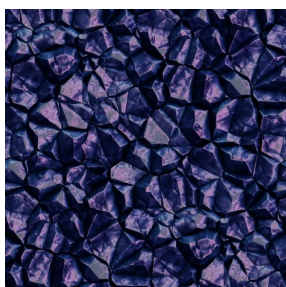
SAPHIR Violine 105



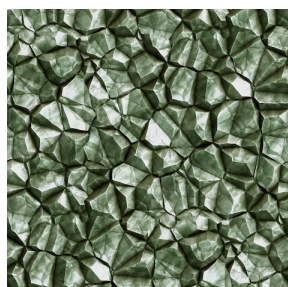
SAPHIR Gentiane 16



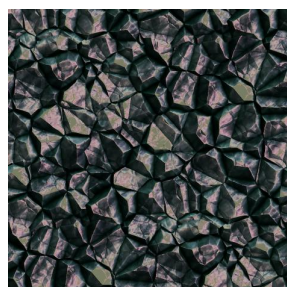
SAPHIR Aubergine 27



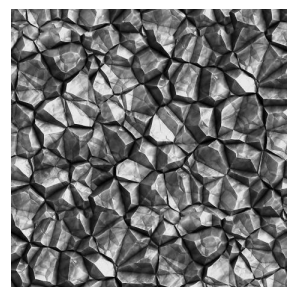
SAPHIR Opéra 104



SAPHIR Absinthe 132



SAPHIR Reflet 140



SAPHIR Acier 18

drapilux
By Sotexpro

DRAPILUX GmbH - Hafenstraße 3, 77694 Kehl - Deutschland

Non-contractual photos and colors - Indicative fitting - Fitting may vary depending on support selected