



**ETAMINE BPI 00**  
Printing support



**MUNA Coco 142**  
Print pattern



## Printing support **ETAMINE BPI 00** Print pattern **MUNA Coco 142**

High-quality, light and airy sheer curtains.

### Technical properties



Flame retardant    Transparent

**Applications** Roman blinds - Panel curtains - Curtains

**Composition** 100% FR polyester

**Weight** 95 g/m<sup>2</sup>

**Width** 290 cm

**Fabric direction** Room High Direction

**Fitting** ↔ cm ↓ cm

**Maintenance advice**     

**Label** France Terre Textile / OEKO-TEX STANDARD 100

**Minimum order** 25 linear(s) meter(s)



Visual not taking into account the printing medium, the final rendering may vary according to the chosen medium.

## Technical characteristics

Flame retardant	M1 / B1 / IMO PASS / UNI 8456 / 9174 Classe Uno
Transparent veil	Yes
Resilience	<p>Dimensional Stability (%)</p> <p>Warp 0</p> <p>Weft 0</p> <p>Breaking Elongation</p> <p>Warp 46</p> <p>Weft 13</p> <p>Breaking load (daN)</p> <p>Warp 41</p> <p>Weft 40</p>



# Print pattern MUNA



MUNA Cactus 36



MUNA soleil 90



MUNA gris 97



MUNA lin 11



MUNA Melon 22



MUNA souris 31



MUNA lagon 110



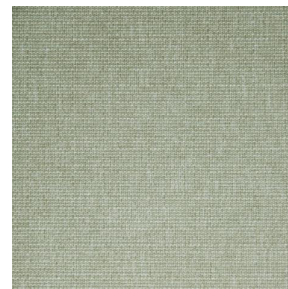
MUNA jade 116



MUNA terre 107



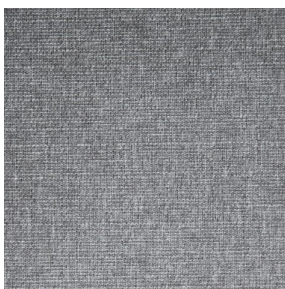
MUNA céladon 135



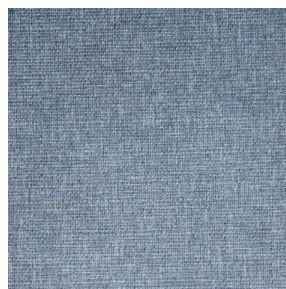
MUNA Sable 67



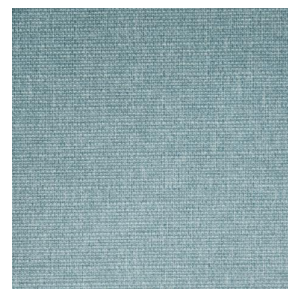
MUNA Saumon 143



MUNA Sisal 140



MUNA Tourterelle 138



MUNA Ardoise 87



MUNA Tilleul 103



MUNA Chanvre 72



MUNA Graphite 77



MUNA Olive 61



MUNA Lierre 124

**drapilux**  
By Sotexpro

DRAPILUX GmbH - Hafenstraße 3, 77694 Kehl - Deutschland

Non-contractual photos and colors - Indicative fitting - Fitting may vary depending on support selected



# Print pattern MUNA



MUNA Indigo 144



MUNA Sienne 29



MUNA Rouge 21



MUNA Saphir 106



MUNA Violine 105



MUNA Titanium 98



MUNA Acier 18