



ETAMINE BPI 00  
Printing support



SCOURTIN Sapin 126  
Print pattern



## Printing support **ETAMINE BPI 00** Print pattern **SCOURTIN Sapin 126**

High-quality, light and airy sheer curtains.

### Technical properties



Flame retardant    Transparent

Applications Roman blinds - Panel curtains - Curtains

Composition 100% FR polyester

Weight 95 g/m<sup>2</sup>

Width 290 cm

Fabric direction Room High Direction

Fitting ↔ cm ↓ cm

Maintenance advice     

Label France Terre Textile / OEKO-TEX STANDARD 100

Minimum order 25 linear(s) meter(s)



Visual not taking into account the printing medium, the final rendering may vary according to the chosen medium.

## Technical characteristics

Flame retardant	M1 / B1 / IMO PASS / UNI 8456 / 9174 Classe Uno	
Transparent veil	Yes	
Resilience	Dimensional Stability (%)	
	Warp	0
	Weft	0
	Breaking Elongation	
	Warp	46
	Weft	13
	Breaking load (daN)	
	Warp	41
Weft	40	

# Print pattern SCOURTIN



SCOURTIN Beige 63



SCOURTIN Fuchsia 33



SCOURTIN Bergamote  
121



SCOURTIN Anthracite  
38



SCOURTIN Violine 105



SCOURTIN Pacifique 54



SCOURTIN Rose 129



SCOURTIN Blanc 01



SCOURTIN Lin 11



SCOURTIN Naturel 26



SCOURTIN Citrouille  
136



SCOURTIN Turquoise 53



SCOURTIN Brun 23



SCOURTIN Hortensia  
134



SCOURTIN Orage 123



SCOURTIN Rubis 59



SCOURTIN Ficelle 09



SCOURTIN Maïs 37



SCOURTIN Céladon 135



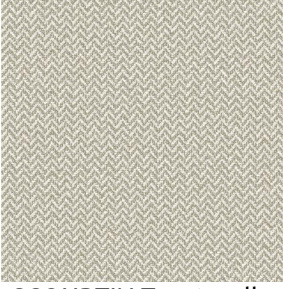
SCOURTIN Ebene 113

**drapilux**  
By Sotexpro

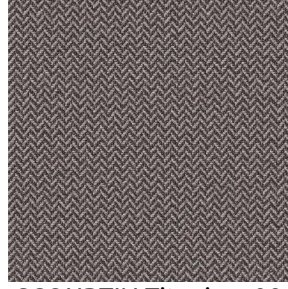
DRAPILUX GmbH - Hofenstraße 3, 77694 Kehl - Deutschland

Non-contractual photos and colors - Indicative fitting - Fitting may vary depending on support selected

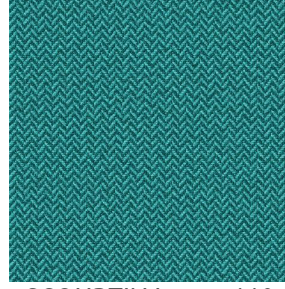
## Print pattern SCOURTIN



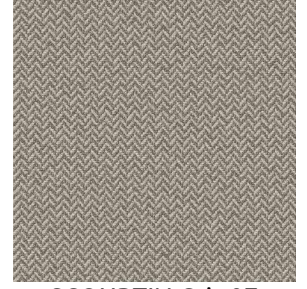
SCOURTIN Tourterelle  
138



SCOURTIN Titanium 98



SCOURTIN Lagon 110



SCOURTIN Gris 97