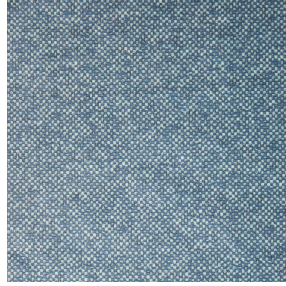




ETAMINE BPI 00  
Printing support



ANATOLE Celadon 135  
Print pattern



# Printing support **ETAMINE BPI 00** Print pattern **ANATOLE Celadon 135**

High-quality, light and airy sheer curtains.

## Technical properties



Flame retardant    Transparent

Applications    Roman blinds - Panel curtains - Curtains

Composition    100% FR polyester

Weight    95 g/m<sup>2</sup>

Width    290 cm

Fabric direction    Room High Direction

Fitting    ↔ cm ↓ cm

Maintenance advice   

Label    France Terre Textile / OEKO-TEX STANDARD 100

Minimum order    25 linear(s) meter(s)



Visual not taking into account the printing medium, the final rendering may vary according to the chosen medium.

## Technical characteristics

Flame retardant	M1 / B1 / IMO PASS / UNI 8456 / 9174 Classe Uno	
Transparent veil	Yes	
Resilience	Dimensional Stability (%)	
	Warp	0
	Weft	0
	Breaking Elongation	
	Warp	46
	Weft	13
Breaking load (daN)	Warp	41
	Weft	40

# Print pattern ANATOLE



ANATOLE Naturel 26



ANATOLE lin 11



ANATOLE Ficelle 09



ANATOLE Océan 91



ANATOLE Titanium 98



ANATOLE Cactus 36



ANATOLE mousse 92



ANATOLE Or 94



ANATOLE Chaudron  
118



ANATOLE Amarante  
108



ANATOLE Taupe 95