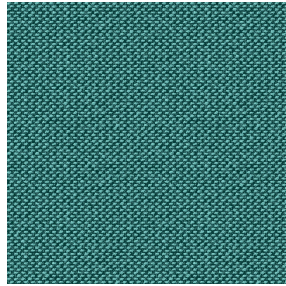




ETAMINE BPI 00
Printing support



METIS Céladon 135
Print pattern



Printing support **ETAMINE BPI 00** Print pattern **METIS Céladon 135**

High-quality, light and airy sheer curtains.

Technical properties



Flame retardant



Transparent

Applications Roman blinds - Panel curtains - Curtains

Composition 100% FR polyester

Weight 95 g/m²

Width 290 cm

Fabric direction Room High Direction

Fitting ↔ 0.0 cm ↓ 0.0 cm

Maintenance advice     

Label France Terre Textile / OEKO-TEX STANDARD 100

Minimum order 25 linear(s) meter(s)



Visual not taking into account the printing medium, the final rendering may vary according to the chosen medium.

Technical characteristics

Flame retardant	M1 / B1 / IMO PASS / UNI 8456 / 9174 Classe Uno												
Transparent veil	Yes												
Resilience	<p>Dimensional Stability (%)</p> <table> <tr> <td>Warp</td> <td>0</td> </tr> <tr> <td>Weft</td> <td>0</td> </tr> </table> <p>Breaking Elongation</p> <table> <tr> <td>Warp</td> <td>46</td> </tr> <tr> <td>Weft</td> <td>13</td> </tr> </table> <p>Breaking load (daN)</p> <table> <tr> <td>Warp</td> <td>41</td> </tr> <tr> <td>Weft</td> <td>40</td> </tr> </table>	Warp	0	Weft	0	Warp	46	Weft	13	Warp	41	Weft	40
Warp	0												
Weft	0												
Warp	46												
Weft	13												
Warp	41												
Weft	40												

Print pattern METIS



METIS Gentiane 16



METIS Absinthe 132



METIS Noir 10



METIS Citrouille 136



METIS Chanvre 72



METIS Gris 97



METIS Bergamote 121



METIS Violine 105



METIS Perle 96



METIS Lin 11



METIS Sienne 29



METIS Lagon 110



METIS Cobalt 114



METIS Framboise 81



METIS Abricot 08



METIS Chamois 111



METIS Ivoire 115



METIS Ficelle 09



METIS Rose 129



METIS Parme 79

drapilux
By Sotexpro

DRAPILUX GmbH - Hofenstraße 3, 77694 Kehl - Deutschland

Non-contractual photos and colors - Indicative fitting - Fitting may vary depending on support selected

Print pattern METIS



METIS Cactus 36



METIS Hortensia 134



METIS Naturel 26



METIS Chaudron 118