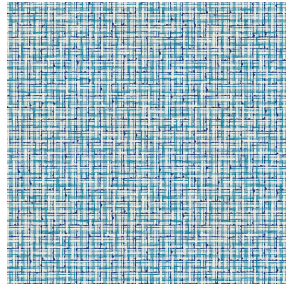




**ETAMINE BPI 00**  
Printing support



**SALIN Turquoise 53**  
Print pattern



## Printing support **ETAMINE BPI 00** Print pattern **SALIN Turquoise 53**

High-quality, light and airy sheer curtains.

### Technical properties



Flame retardant



Transparent

**Applications** Roman blinds - Panel curtains - Curtains

**Composition** 100% FR polyester

**Weight** 95 g/m<sup>2</sup>

**Width** 290 cm

**Fabric direction** Room High Direction

**Fitting** ↔ 0.0 cm ↓ 0.0 cm

**Maintenance advice**     

**Label** France Terre Textile / OEKO-TEX STANDARD 100

**Minimum order** 25 linear(s) meter(s)



Visual not taking into account the printing medium, the final rendering may vary according to the chosen medium.

## Technical characteristics

Flame retardant

M1 / B1 / IMO PASS / UNI 8456 / 9174 Classe Uno

Transparent veil

Yes

Resilience

Dimensional Stability (%)

Warp 0

Weft 0

Breaking Elongation

Warp 46

Weft 13

Breaking load (daN)

Warp 41

Weft 40

# Print pattern SALIN



SALIN Abricot 08



SALIN Anis 62



SALIN Fuchsia 33



SALIN Naturel 26



SALIN Océan 91



SALIN Orange 15



SALIN Rouge 21



SALIN Vert 24