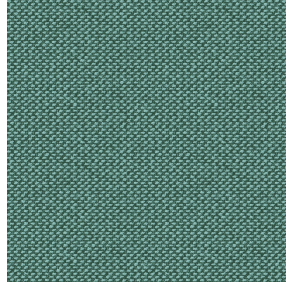




COMET BPI 00  
Printing support



METIS Absinthe 132  
Print pattern



# Printing support **COMET BPI 00** Print pattern **METIS Absinthe 132**

Blackout Print Support

## Technical properties



Flame retardant

**Applications** Roman blinds - Panel curtains - Curtains

**Composition** 100% polyester with white flocked acrylic backing

**Weight** 390 g/m<sup>2</sup>

**Width** 280 cm

**Fabric direction** Room High Direction

**Fitting** ↔ 0.0 cm ↓ 0.0 cm

**Maintenance advice**     

**Label**

**Minimum order** 25 linear(s) meter(s)



Visual not taking into account the printing medium, the final rendering may vary according to the chosen medium.

## Technical characteristics

Flame retardant

EN13773 : 2003 Class 1 / BS 5867 TYPE B / B1 / IMO PASS / UNI 8456 / 9174 Classe Uno

Resilience

Dimensional Stability (%)

Warp 0

Weft 0

Breaking Elongation

Warp 38

Weft 38

Breaking load (daN)

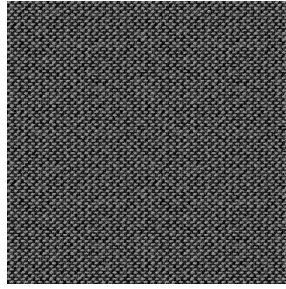
Warp 170

Weft 120

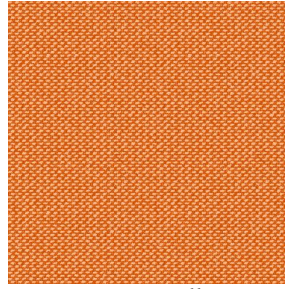
# Print pattern METIS



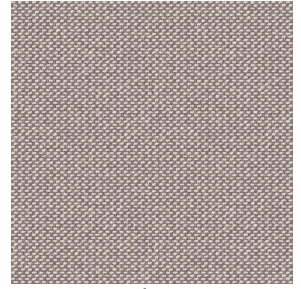
METIS Gentiane 16



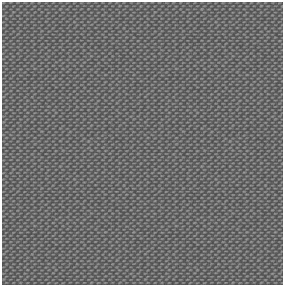
METIS Noir 10



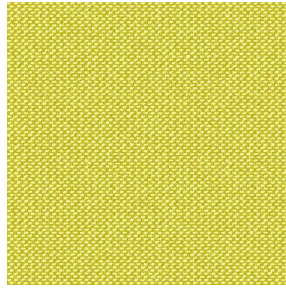
METIS Citrouille 136



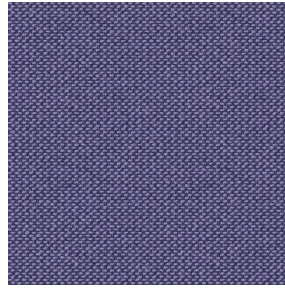
METIS Chanvre 72



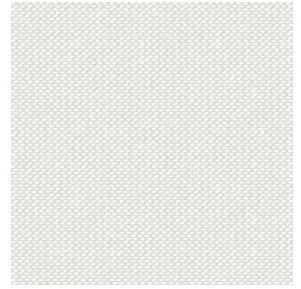
METIS Gris 97



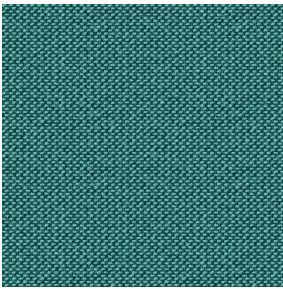
METIS Bergamote 121



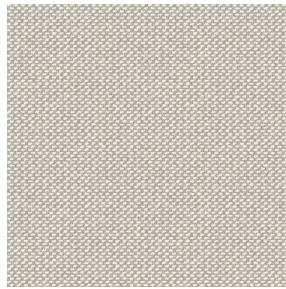
METIS Violine 105



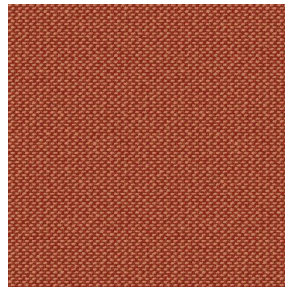
METIS Perle 96



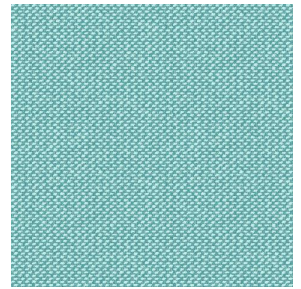
METIS Céladon 135



METIS Lin 11



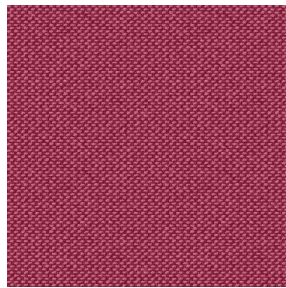
METIS Sienne 29



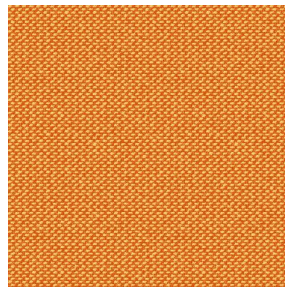
METIS Lagon 110



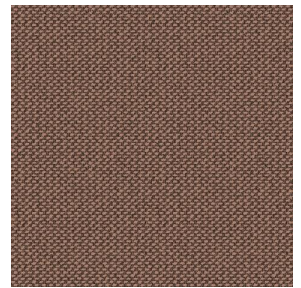
METIS Cobalt 114



METIS Framboise 81



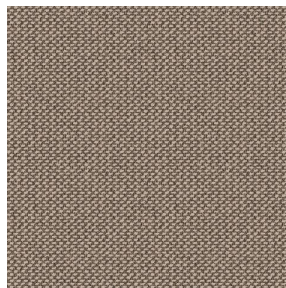
METIS Abricot 08



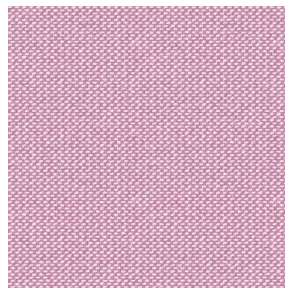
METIS Chamois 111



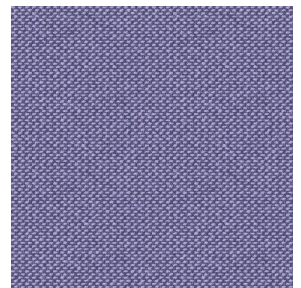
METIS Ivoire 115



METIS Ficelle 09



METIS Rose 129



METIS Parme 79

**drapilux**  
By Sotexpro

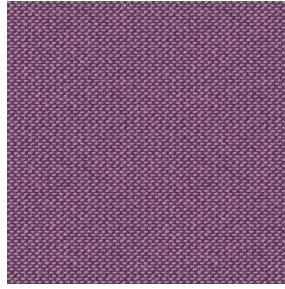
DRAPILUX GmbH - Hofenstraße 3, 77694 Kehl - Deutschland

Non-contractual photos and colors - Indicative fitting - Fitting may vary depending on support selected

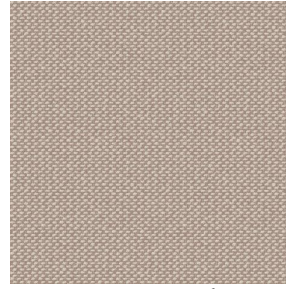
## Print pattern METIS



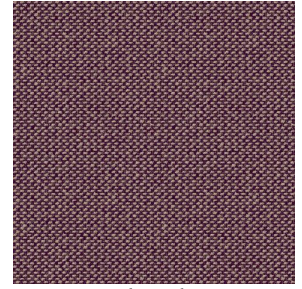
METIS Cactus 36



METIS Hortensia 134



METIS Naturel 26



METIS Chaudron 118