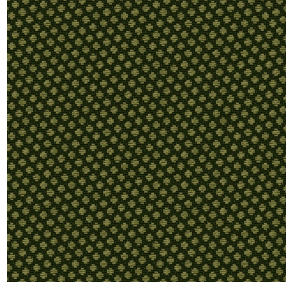




COMET BPI 00
Printing support



GONIDIE Lierre 124
Print pattern



Printing support **COMET BPI 00** Print pattern **GONIDIE Lierre 124**

Blackout Print Support

Technical properties



Flame retardant

Applications Roman blinds - Panel curtains - Curtains

Composition 100% polyester with white flocked acrylic backing

Weight 390 g/m²

Width 280 cm

Fabric direction Room High Direction

Fitting ↔ 0.0 cm ↓ 0.0 cm

Maintenance advice     

Label

Minimum order 25 linear(s) meter(s)



Visual not taking into account the printing medium, the final rendering may vary according to the chosen medium.

Technical characteristics

Flame retardant

EN13773 : 2003 Class 1 / BS 5867 TYPE B / B1 / IMO PASS / UNI 8456 / 9174 Classe Uno

Resilience

Dimensional Stability (%)

Warp 0

Weft 0

Breaking Elongation

Warp 38

Weft 38

Breaking load (daN)

Warp 170

Weft 120

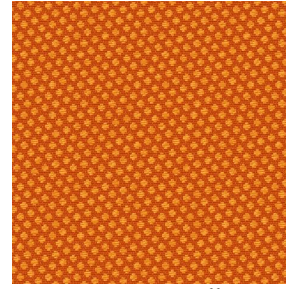
Print pattern GONIDIE



GONIDIE Souris 31



GONIDIE Beige 63



GONIDIE Citrouille 136



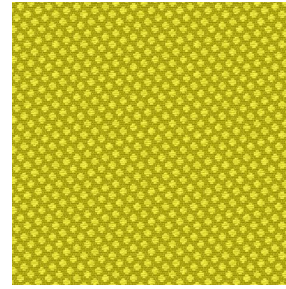
GONIDIE Glacier 43



GONIDIE Noir 10



GONIDIE Céladon 135



GONIDIE Anis 62



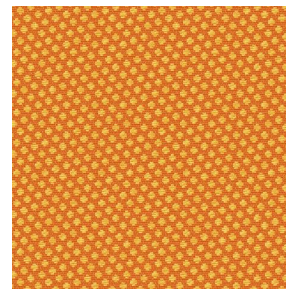
GONIDIE Perle 96



GONIDIE Mousse 92



GONIDIE Tourterelle
138



GONIDIE Brique 42



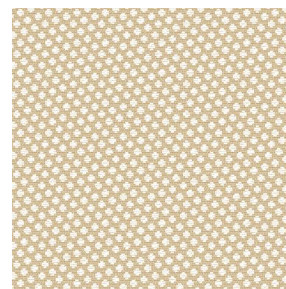
GONIDIE Opéra 104



GONIDIE Pacifique 54



GONIDIE Brun 23



GONIDIE Crème 32



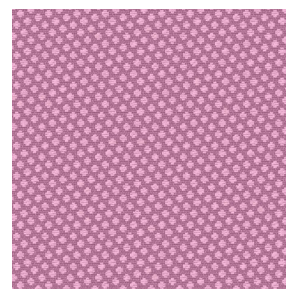
GONIDIE Taupe 95



GONIDIE Lin 11



GONIDIE Bergamote
121



GONIDIE Hortensia 134



GONIDIE Vieux rose 64

drapilux
By Sotexpro

DRAPILUX GmbH - Hofenstraße 3, 77694 Kehl - Deutschland

Non-contractual photos and colors - Indicative fitting - Fitting may vary depending on support selected

Print pattern GONIDIE



GONIDIE Emeraude 88



GONIDIE Fuchsia 33



GONIDIE Ebene 113



GONIDIE Ficelle 09